



UNIVERSITY OF ILLINOIS  
CANCER CENTER

# Community Outreach, Engagement, & Health Equity



**2021 CEHE ANNUAL REPORT**

# TABLE OF CONTENTS



<b>Overview</b>	<b>01</b>
<b>Community Outreach &amp; Engagement Aims</b>	<b>03</b>
<b>Community Advisory Board (CAB)</b>	<b>04</b>
<b>AIM 1: Community Burden &amp; Needs</b>	<b>05</b>
<b>AIM 2: Outreach, Education &amp; Services</b>	<b>09</b>
<b>AIM 3: Informing Research</b>	<b>23</b>
<b>AIM 4: Policy Advocacy</b>	<b>28</b>
<b>2021 Community Partnerships</b>	<b>31</b>

This report was designed and developed by Senior Research Specialist Ana Williams MPH, MHA, DDS in collaboration with the Office of Community Engagement & Health Equity (CEHE) Team.



# OVERVIEW

The University of Illinois Cancer Center's (UI Cancer Center) Office of Community Engagement and Health Equity (CEHE) is a unique community-centered office that engages communities within our catchment area and beyond to decrease the cancer burden and to increase cancer awareness and access to early detection, and prevention.

This report reflects the projects and initiatives that the team led and implemented during 2021 in collaboration with cancer center members, community partners, and patients.

## Our Vision

To create equitable access to cancer awareness and cancer care in minority and underrepresented communities.

## Our Mission

To be a resource in developing, supporting, and integrating community-focused cancer prevention initiatives and research to reduce the burden of cancer inequities.

## Our Values

**Community-Centered:** We place the community at the forefront of service endeavors and fostering research. We understand that to optimize positive health outcomes, communities are integral to all phases of research.

**Diversity:** We represent the diverse communities that we serve and are committed to providing a space for understanding, respecting, and valuing people from all backgrounds.

**Collaborative:** We engage in multi-institutional, transdisciplinary partnerships with community stakeholders to advance cancer health equity.



The CEHE team disseminates the needs of community members and informs research responsive to those needs. The engagement team builds relationships with community partners, conducts best practices through community education, disseminates project outcomes to communities and UI Cancer Center programs, and advocates for policy changes that focus on improving cancer care in our communities.



## CEHE





# COMMUNITY OUTREACH & ENGAGEMENT AIMS

We are dedicated to conducting best practices related to community-based outreach and education to increase cancer screening, prevention, and inform research across the cancer continuum of care, from early detection to survivorship.

## Aim 1 - Community Burden & Needs

Define and monitor the cancer burden within the catchment area. Disseminate information to researchers, clinicians, and community stakeholders to inform the development and implementation of research and community-responsive interventions that address the needs of the catchment area and beyond.

## Aim 2 - Outreach, Education & Services

Promote and conduct community-informed outreach and education, facilitated through community and academic partnerships that translate into and inform research.

## Aim 3 - Research Engagement

Inform and foster community-engaged research across UI Cancer Center's basic, clinical, and population science programs including by disseminating actionable information to researchers, clinicians, and community stakeholders.

## Aim 4 - Policy Advocacy

Support the development, implementation, and dissemination of policy and advocacy initiatives that advance cancer health equity.



# COMMUNITY ADVISORY BOARD (CAB)

The Community Advisory Board (CAB) is responsible for ensuring the community voice is heard by researchers and clinicians working to address cancer disparities in the communities that we serve.

The CAB has fourteen advocates who represent: cancer survivor leaders, civic leaders, and organizational leaders from community organizations, Federally Qualified Health Centers (FQHC), and other organizations focused on cancer health equity.



**Candace Henley**  
The Blue Hat  
Foundation

Co-Chair



**Joanne Glenn**  
W.O.T. (Women on  
Top of Their Game)  
Foundation

Co-Chair



**Judith Guitelman**  
Executive Director/  
Founder, ALAS-  
Wings



**Charles Walton,  
MBA**  
Executive Director,  
100 Black Men of  
Chicago



**Gina Curry,  
MPH, MBA**  
University of  
Chicago Medicine  
Comprehensive  
Cancer Center



**Kathleen Goss,  
PhD**  
VP of Cancer  
Control, American  
Cancer Society



**Jacqueline Soto-  
Herrera**  
Director of External  
Affairs and  
Communication,  
Humboldt Park  
Health



**Josef Y Ben  
Levi, EdD**  
Instructor,  
Northeastern  
Illinois University



**Rep. Marcus  
Evans Jr.**  
(D-Chicago)  
33rd District



**Russell Hopkins**  
Founder, Blue Star  
Family Platoon



**Ken J.A. Griffin,  
MA**



**Paul Luu, CEO**  
Chinese American  
Service League



**Dr. Nikhila Juvvadi**  
Chief Clinical  
Officer, The Loretto  
Hospital



**Judes Fleurimont**  
Research Program  
Manager, UI Health,  
Mile Square Health  
Centers



# COMMUNITY BURDEN & NEEDS

## UICC Cancer Case Densities by Zip Code (2014-2018)

### Cook County

#### Legend

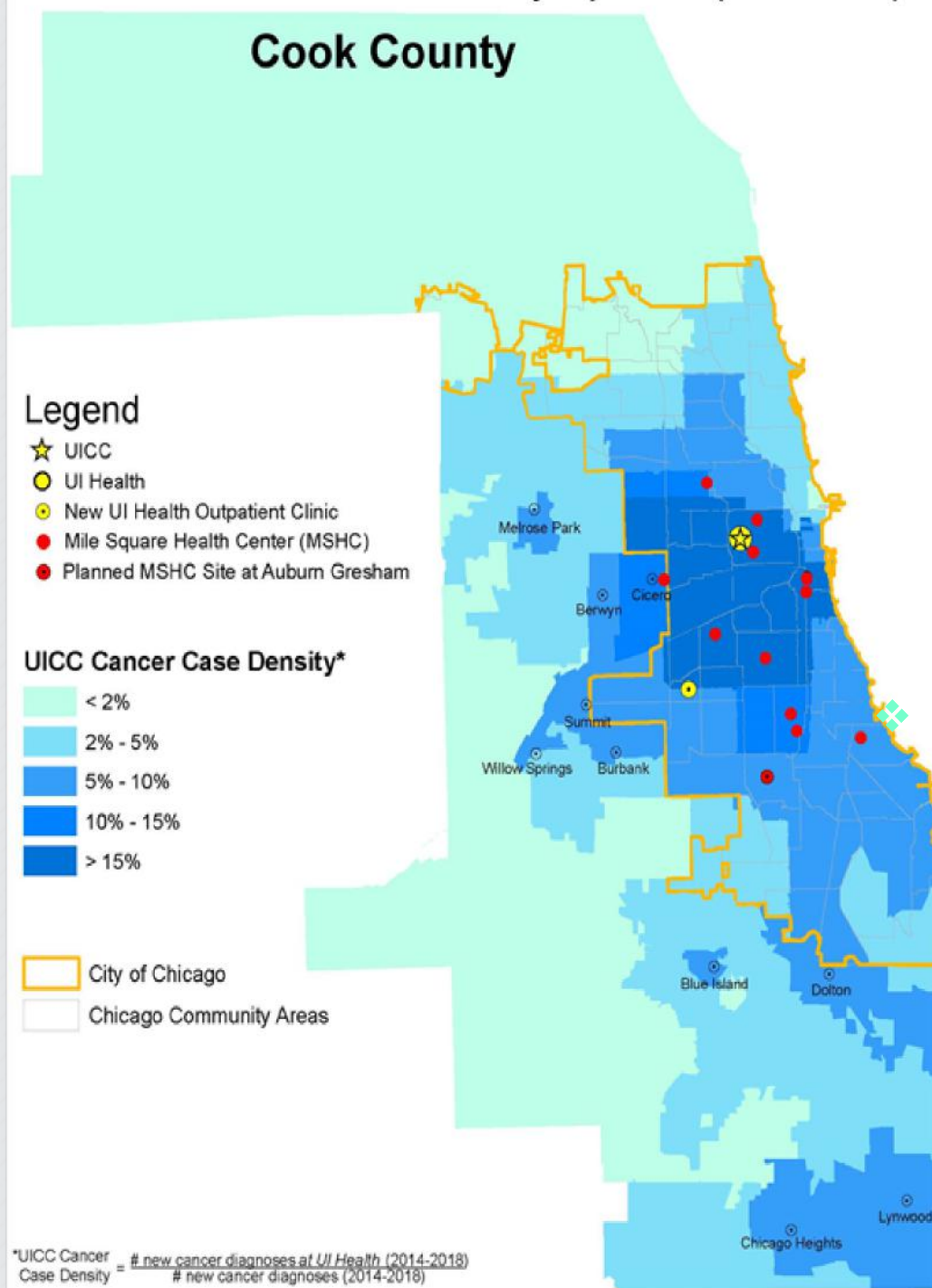
- ★ UICC
- UI Health
- New UI Health Outpatient Clinic
- Mile Square Health Center (MSHC)
- Planned MSHC Site at Auburn Gresham

#### UICC Cancer Case Density\*

- < 2%
- 2% - 5%
- 5% - 10%
- 10% - 15%
- > 15%

- City of Chicago
- Chicago Community Areas

\*UICC Cancer Case Density =  $\frac{\# \text{ new cancer diagnoses at UI Health (2014-2018)}}{\# \text{ new cancer diagnoses (2014-2018)}}$



❖ UI Cancer Center defines its catchment area as Cook County, which includes the City of Chicago (more than **40%** Illinois' population).

❖ Near **5.2** million diverse residents live in Cook County, of which **58%** are minorities, **23%** African American & **26%** Latino.

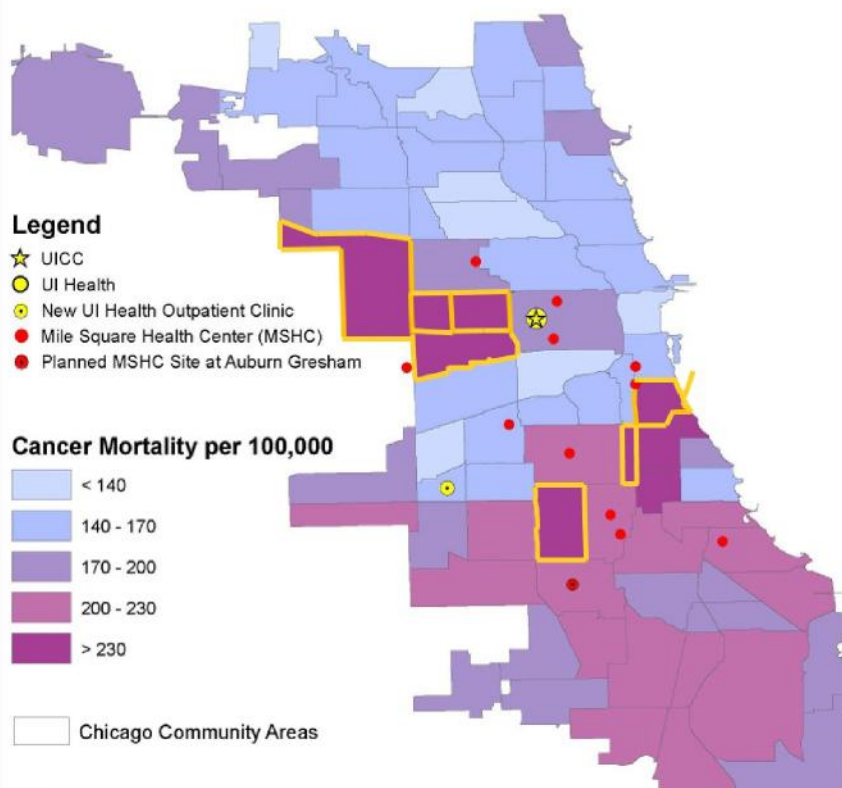
❖ Cook County includes a number of Health Resources and Services Administration (HRSA) designated high levels of healthcare needs, facing higher incidence and/or mortality rates for breast, colorectal, cervical, prostate, and lung cancer.

❖ African Americans experience excess mortality at nearly every cancer site.



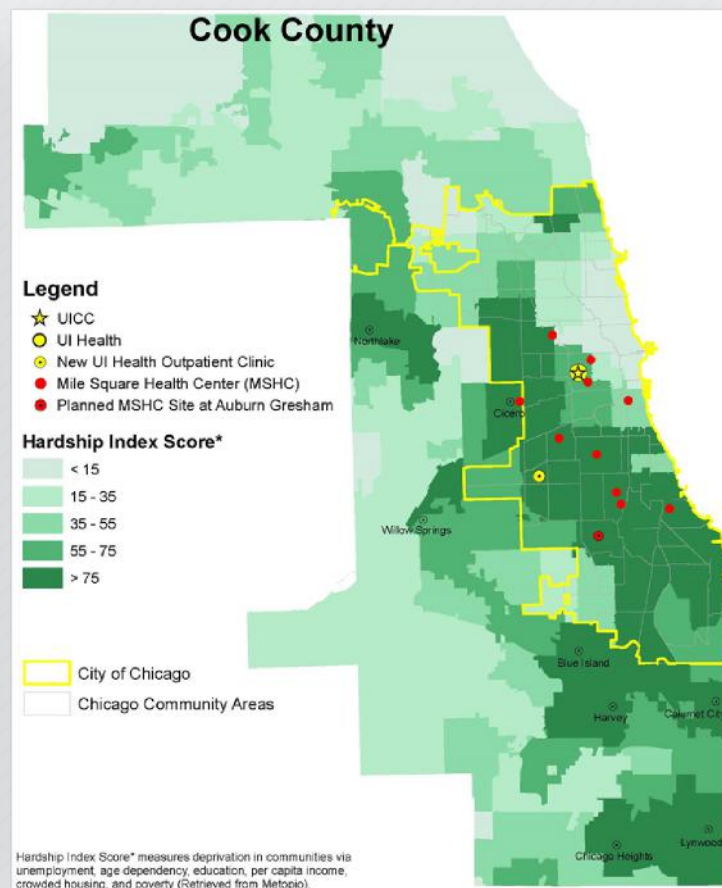
## CANCER MORTALITY 2014 – 2018

### Chicago



## HARDSHIP INDEX SCORE 2015 – 2019

### Cook County



- ❖ Community areas with the highest cancer mortality rates (dark pink areas outlined in orange) are located on the West and South sides of the city, where African Americans and Latinos predominantly live.
- ❖ The **Hardship Index Score** is a composite score reflecting hardship in the community (higher values indicate greater hardship). Incorporates unemployment, age dependency, education, per capita income, crowded housing, and poverty into a single score that allows a comparison between geographies.
- ❖ Community areas with the highest hardship index scores (dark green areas on the map) also bear the highest burden of cancer.



# COMMUNITY BURDEN & NEEDS

## UI CAAN COMMUNITY HEALTH NEEDS ASSESSMENT (CHNA)

The UI Cancer Screening Access, Awareness, Navigation (UI CAAN) project began in 2018 in partnership with community safety-net hospitals, community organizations, and other stakeholders.

## PURPOSE

In response to documented disruptions in cancer care due to the COVID-19 pandemic, a Community Health Needs Assessment (CHNA) was developed to understand engagement in cancer screening, confidence in the healthcare system, and delays in care-seeking.

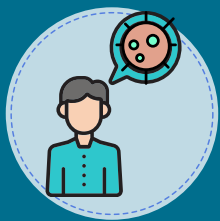
## GOALS



Conduct CHNA with UI CAAN partners using a community engagement model.



Examine multilevel factors related to engagement in cancer screening.



To understand the impacts of the COVID-19 pandemic on cancer screening.



Promote cancer screenings and navigation at community outreach events.

## DATA COLLECTED

**464**

Community members from the UI Cancer Center catchment area responded during **12** community events from July-September 2021 .

### Funded by:



### Supported by:



HUMBOLDT PARK  
HEALTH  
ADVANCING HEALTH EQUITY





# COMMUNITY BURDEN & NEEDS

## 2022-2027 ICCCP COMMUNITY ENGAGEMENT STRATEGY

CEHE led the Community Engagement Strategy to engage stakeholders using qualitative assessments to share feedback on the **2022-2027 Illinois Comprehensive Cancer Control Plan (ICCCP)** to ensure that community input can be integrated into the plan. This plan will be used to identify, develop, and determine policy recommendations and advocacy efforts across the UI Cancer Center catchment area and the state.

### 1 TOWN HALL

**62**  
**PARTICIPANTS**



**90** Minute discussion on how cancer impacts their life and strategies to improve cancer disparities and outcomes in Illinois.

**13%** Cancer Survivors

**10%** Current or past Caregivers of a cancer patient

### 8 FOCUS GROUPS

**53**  
**PARTICIPANTS**



**94%** of participants were female and **52** years of age on average.

**26%** Rural Residents **62%** Cancer Survivors

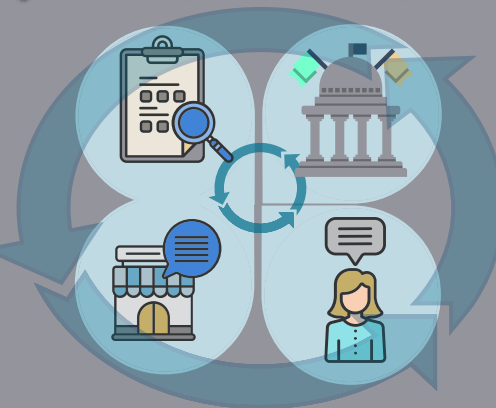
**47%** Current or past Caregivers of a cancer patient

**PRIMARY FINDINGS** indicate that Illinoisans experience disparities across the cancer continuum as a result of multilevel determinants of health, including fundamental, intermediate, and proximate factors.

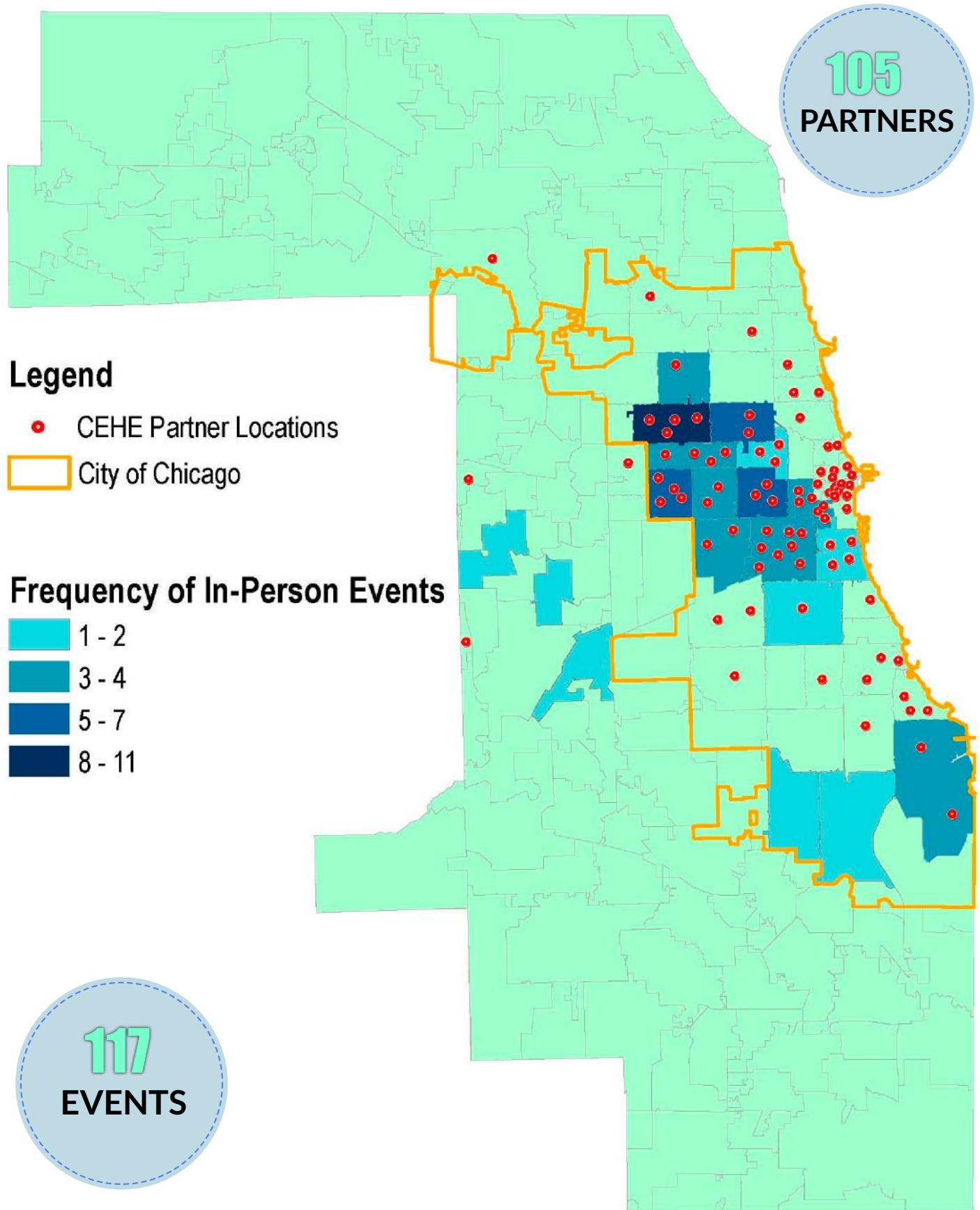
**COVID-19** conversations focused on its impact across the cancer continuum and health equity.



Participants proposed recommendations at the policy, clinical, community, and individual-level to address the disparities identified during the community engagement strategy.



## 2021 CEHE Partners and Events





# OUTREACH, EDUCATION & SERVICES

## 2021 COMMUNITY BENEFITS SUMMARY



Community Members  
**7,471** Engaged

**160**

Engagement and Outreach Activities providing Cancer Awareness, Education, and Prevention




**10,000 +**

Listeners reached through the monthly WVON radio Show: "A Doctor in the House"

**693** People Screened  
for Cancer



**4** CANCER  
DIAGNOSED  




**\$50,000 +**  
Invested

**11**

Organizations, including 2 Safety Net Hospitals through Community Implementation projects.

**105** Community Partnerships



Each partnership was instrumental in project implementation, community dissemination, outreach, and engagement.

## 2021 COMMUNITY PARTNERSHIP ASSESSMENT SURVEY

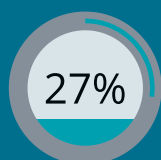
Our annual Partnership Assessment Survey was disseminated to **99** community partners to assess the quality and productivity of partnerships with the Community Engagement and Health Equity Office, strengthen bidirectional engagement, and understand the health and cancer care priorities of the communities we serve.

### BASED ON LEVELS OF PARTNERSHIPS

n= 33

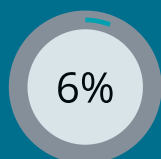
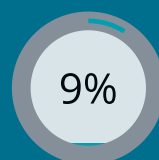
How would you classify your **CURRENT** partnership with the UI Cancer Center?

What level of engagement **WOULD YOU LIKE TO HAVE** with the UI Cancer Center?



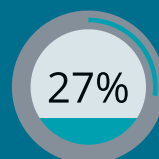
#### COMMUNICATE

Inter-agency information sharing



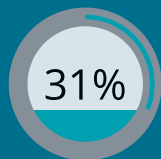
#### COOPERATE

Informal interaction on specific discrete activities or projects



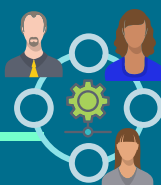
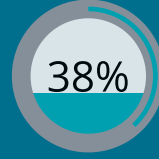
#### COORDINATE

Organizations adjust and align work with each other for greater outcomes



#### COLLABORATE

Longer team interaction based on shared missions and goals



#### INTEGRATE

Fully integrated programs, planning, and funding





## 2021 COMMUNITY PARTNERSHIP ASSESSMENT RESPONSES

n= 33

### Percentage of Partners that Agree or Strongly Agree with the following statements

91%

1 Each partner is willing to share some of their ideas, resources, influences, and ability to fulfill goals.

85%

2 There is a history of good relations in this partnership.

70%

3 Partners make decisions and solve problems together in a manner that is accountable, responsive, and inclusive.

82%

4 There is a shared understanding of, and commitment to the goals in this partnership.

85%

5 The partnership brings added value to partners individually as well as collectively.

85%

6 Processes such as referral protocols, data collection, event requests, and reporting mechanisms are available.

91%

7 Each partner is willing to share some of their ideas, resources, influences, and ability to fulfill goals.

88%

8 There is a clear goal for this partnership.

## **COMMISSION ON CANCER (COC)**

The Commission on Cancer (CoC) is a consortium of professional organizations dedicated to improving survival and quality of life for cancer patients through standard-setting, which promotes cancer prevention, research, education, and monitoring of comprehensive quality care.

UI Health is a CoC accredited cancer program. The UI Cancer Center CEHE team was responsible for the 2021 initiatives that successfully met Standards 8.1, 8.2, and 8.3.



### **STANDARD 8.1: Addressing Barriers to Care**

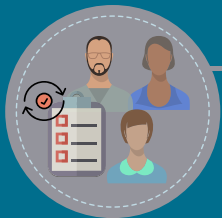
Support provided with transportation barriers for cancer screening.



### **STANDARD 8.2: Cancer Prevention Event**

The cancer committee holds at least one cancer prevention event each year. We hosted *'The Great American Smokeout - Nobody Quits Like Chicago'* event focused on:

- Increasing participants' knowledge and awareness of lung cancer
- Change behaviors that reduce the risk of cancer



### **STANDARD 8.3: Cancer Screening Event**

The cancer committee holds at least one cancer screening event each year, focused on decreasing the number of individuals who present with late-stage cancer. In October our team hosted a breast cancer screening event to motivate individuals to get screened. Due to COVID-19, the majority of screening events were canceled.



# OUTREACH, EDUCATION & SERVICES

## I.- Mile Square Accessible Mammogram Outreach and Engagement (Mi-MAMO)

Investigators: Yamilé Molina, MS, MPH, PhD; Vida Henderson, PhD PharmD, MPH, MFA; Lauren Green, MD; Susan Hong, MD, MPH; Nancy Miranda, MD; Nicole Gastala, MD; Nasima Mannan, MPH

Project Team: Paola Torres, MPHc; Brenda Soto, MPHc; Miguel Negrete, MPH, PhDc; Alexandra Larkin, MPH; Erica Martinez, MBA, MPH

The Mi-MAMO program was implemented to reduce barriers and increase breast cancer screening by follow-up with breast health services for under-resourced and uninsured/underinsured women.

The program primarily funded by the Chicago Department of Public Health mitigates barriers to services by providing free breast cancer screening services and patient navigation at the FQHCs Mile Square Health Center (MSHC).

### 2021



**330** NAVIGATED  
INDIVIDUALS

**148**   
DIAGNOSTIC SCREENING  
NAVIGATION SUPPORT

**4** PATIENT DIAGNOSED  
& LINKED TO CARE



**117**   
SCREENED  
INDIVIDUALS

**7,900+**   
ENGAGED THROUGH COMMUNITY  
OUTREACH & EDUCATION

**4** years since the implementation, our team continues to work to ensure that a patient who received abnormal results in **2017** has support and has a positive outcome, by ensuring no barriers to follow-up care.

**65** EVENTS



# OUTREACH, EDUCATION & SERVICES

## II.- Illinois Breast and Cervical Cancer (IBCCP) Lead Agency - UI Health

Investigators: Pamela Ganschow, MD

Project Team: Maria Perez; Paola Torres MPHc; Kristin Andersen MSN, RN-BC, Margarete Duran

The Illinois Breast and Cervical Cancer Program (IBCCP) is a Statewide Cooperative Grant Agreement Program funded by the Centers for Disease Control and Prevention (CDC) and State General Revenue Funds.

The program ensures that eligible Illinois women receive regular screening for breast and cervical cancer, prompt follow-up of abnormal findings when needed, and ensure that all screening and diagnostic tests are performed according to current recommendations for quality assurance.

### PROGRAM INITIAL PHASE:



The program's initial phase was completed. A plan was developed to integrate with other outreach cancer screenings projects with the purpose to upscale successful ongoing initiatives and programs at the system level.

Key collaboration with MSHC was built to implement interventions on the electronic health records software 'EPIC', enhancing the patients' referral process for breast and cervical cancer screenings.



### PROGRAM INITIAL GOAL:



Screen and provide breast and cervical cancer screening services to uninsured women monthly, offering navigation assistance services.

**35**



## III.- Illinois Department of Public Health Community Navigation Toolkit & Health Systems Intervention

Investigators: Leslie Carnahan, PhD, MPH; Vida Henderson, PhD, PharmD, MPH, MFA; Brenikki Floyd, PhD, MPH; Arden Handler, DrPH  
Project Team: Ana Williams MPH, MHA, DDS; Paola Torres MPHc; Barbara Williams, MPH

A collaborative partnership between the Illinois Breast and Cervical Cancer Program (IBCCP) and UI Cancer Center aims to increase breast and cervical cancer screening rates at the MSHC by promoting health systems-level interventions and best practices for community navigation.

### COMMUNITY NAVIGATION TOOLKIT



Planned, developed, and conducted  
**4** collaborative learning workshops:

- Current Challenges in Community Navigation
- Engaging with Insurance Companies
- Partner with Employers to Promote Policy Change
- Collecting Screening Rates Baseline

The IBCCP Community Navigation Toolkit Annual Training was conducted. This training included group discussions, case studies, and role-playing exercises.



Community Navigation Toolkit has been useful in supporting day-to-day navigation practice by the IBCCP community navigators.



Collaboration between:



### HEALTH SYSTEMS INTERVENTION

System-wide intervention:

**8,400**

reminders cards with breast cancer screening education were developed and sent to MSHC to increase screening rates after the pandemic.



The Key Informant Interviews (KII) and evaluation processes were completed at both clinic sites, Englewood and South Shore.

Revised bilingual, culturally appropriate education cards on breast and cervical cancer screenings and COVID-19 were developed.



# OUTREACH, EDUCATION & SERVICES

## IV.- UI Cancer Screening, Access, Awareness, & Navigation (UI CAAN)

Investigators: Leslie Carnahan, PhD, MPH; Karriem Watson, DHS, MS, MPH; Vida Henderson, PhD, PharmD, MPH, MFA  
Project Team: Jeanette Gonzalez, MS; Miguel Negrete, MPH, PhD; Tonya Roberson, PhD, MPH, DTR; Barbara Williams, MPH; Theresa Mobley; Maria Olivero, Tigist Mersha, Chibuzor Abasilim.

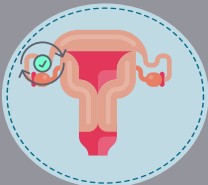
UI CAAN, funded by Bristol-Myers Squibb Foundation (BMSF), aims to improve awareness of cervical and colorectal cancer disparities screening on the Chicago west and south side of Chicago.

The program focuses on under-represented minority populations to address the rates of cervical cancer, screening, and prevention in Austin and Humboldt Park in partnership with Humboldt Park Health and The Loretto Hospital.

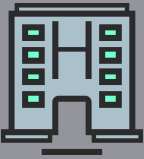
113



COMPLETED CERVICAL  
CANCER  
SCREENING



AT LORETTO HOSPITAL &  
HUMBOLDT PARK HEALTH



56 COMMUNITY  
EVENTS

ENGAGING 2,464 PEOPLE IN  
CERVICAL CANCER/HPV, BREAST  
CANCER AND  
COLORECTAL  
COMMUNITY-BASED  
EDUCATION

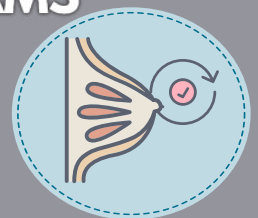


464 CHNAs  
COMPLETED FROM  
UI CC CATCHMENT  
AREA RESIDENTS

DURING 12 COMMUNITY EVENTS,  
ENGAGING A TOTAL OF 1,111  
ATTENDEES



150  
MAMMOGRAMS  
COMPLETED



AT LORETTO HOSPITAL &  
HUMBOLDT PARK HEALTH



# OUTREACH, EDUCATION & SERVICES

## V.- Southside Colorectal Cancer Initiative (Mi-CARE II)

Investigators: Karriem Watson, DHS, MS, MPH

Project Team: Nasima Mannan, MPH; Miguel Negrete, MPH, PhDc; Paola Torres, MPHc

The Mi-CARE II program aims to reduce the colorectal cancer screening burden on the Southside by increasing colorectal cancer screening at three MSHC locations (South Shore, Englewood, and Back of the Yards).

This program is possible through collaboration with UI Cancer Center, UI Health, MSHC, BMS, and multiple other partners, and is funded by the American Cancer Society.

**323** 

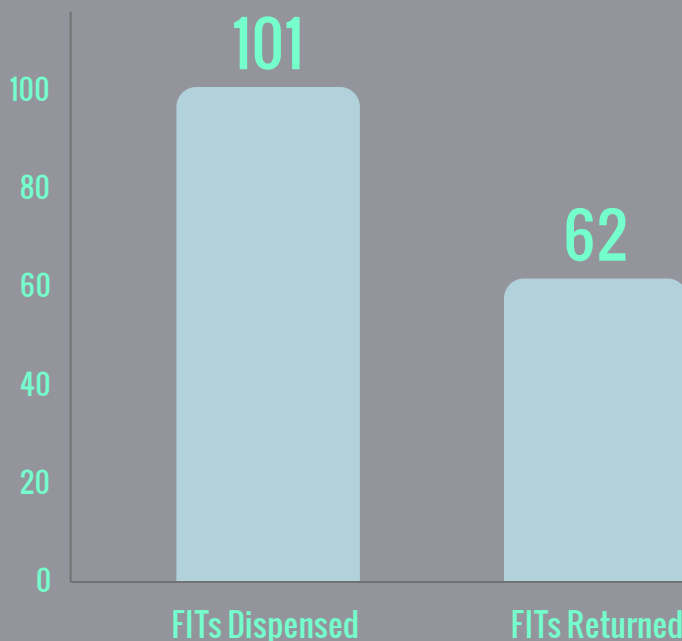
Mile Square patients and community members received targeted colorectal cancer screening outreach and education

**37** provider education sessions to engage Mile Square providers in colorectal cancer screening initiatives

**5,386**

Total of people impacted by the program's outreach activities

### Colorectal Cancer Screening Outcomes using Remote Patient Navigation



At a community event, a community member approached our lay navigator with concerns about a positive FIT test. The individual was uninsurable and was recommended to get a colonoscopy. Unfortunately, the member could not afford to pay out of pocket. The lay navigator connected the member with the patient navigator who helped the patient get their colonoscopy covered. The navigator addressed the language and financial barriers to ensure the patient received quality care. The patient received a new primary care provider at MSHC who was bilingual and able to address any concerns the patient had about their colonoscopy. The patient is scheduled for a colonoscopy this summer. The financial barriers that prevented her from receiving it have been addressed.

# OUTREACH, EDUCATION & SERVICES

## VI.- Improving Cancer Survival & Reducing Treatment Variation with Protocols for Emergency Care (ICARE)

Investigators: Heather Prendergast, MD, MS, MPH; Karriem Watson, DHS, MS, MPH, et al.  
Project Team: Nasima Mannan, MPH; Ryan Stratton

Collaborative Program between UI Health, UI Cancer Center, and other organizations, funded by the CDC to address social determinants of health for survivors utilizing the emergency department for care, using distress thermometer surveys to evaluate patients' needs and link them to care and survivorship programs.

### PROGRAM OUTCOMES:



**118** SURVIVORS ACCEPTED NAVIGATION SERVICE & COMPLETED THE DISTRESS THERMOMETER SURVEYS



**2** ARTICLES WERE PUBLISHED IN 2021:

ARTICLE IN JOURNAL ASSOCIATE OF MEDICINE  
ARTICLE IN POLICY, PRACTICE, AND PREVENTION CENTER



PATIENTS WERE REFERRED TO COMMUNITY RESOURCES AS PER PATIENTS NEEDS.

### PROGRAM AIMS:

**AIM 1:** Evaluate the effectiveness of ED Risk-Stratified, Evidence-Based Treatment protocols on the primary outcome of ED utilization rates and subsequent acute inpatient admissions at 6 -months post-intervention.

**AIM 2:** Evaluate the effectiveness of an ED-based Cancer Patient Navigator on the secondary outcomes of patient engagement and primary care engagement at 6 -months post-intervention.

**AIM 3:** Examine barriers and facilitators to compliance for cancer survivorship recommendations that occur in an ED setting at 6-months post-intervention.



# OUTREACH, EDUCATION & SERVICES

## VII.- Young And A Survivor (YAAS!) Network for Health Equity for Young Breast Cancer Survivors

Investigators: Tamara Hamlish, PhD; Susan Hong, MD; Ardith Z. Doorenbos, PhD, RN, FAAN  
Project Team: Christine Adley; Talia Holzman Castellands, MPH; Sarah Rittner, MA

The Young and A Survivor (YAAS!) network ensures young women affected by breast cancer have the resources and support to meet the challenges of life after a cancer diagnosis.

This program is supported by the CDC and focused on young women who have limited access to resources because of race, color, sexual orientation and/or identity, disability, education, income, and other structural barriers.

**13** YAAS network events for or inclusive of young women diagnosed with breast cancer.



The social media campaign "*Ask the Experts*" was launched, sharing information and support for young women diagnosed with breast cancer from YAAS! expert panel.

A pilot virtual learning collaborative for breast cancer survivorship navigators was conducted.



The social YAAS network has hosted **116** programs for or inclusive of young women resulting in **442** interactions with young women diagnosed with breast cancer, **32** interactions with young women living with metastatic disease, and **193** interactions with co-survivors/caregivers.



**YOUNG AND A SURVIVOR**  
**JOVEN Y SOBREVIVIENTE**

# OUTREACH, EDUCATION & SERVICES

## VIII.- Chicago Health Equity Initiative (CHEI)

Investigators: Tamara Hamlish, Ph.D.; Pamela Ganschow, MD  
Project Team: Genesis Rio, MPH; Erica Martinez, MBA, MPH

A collaborative partnership that includes local academic institutions, community organizations, and FQHCs from around Chicago who have come together to address inequities in access to cancer genetics services by identifying ongoing initiatives that overcome successfully barriers and gaps in existing cancer genetic resources.

### PROGRAM MAIN GOAL:



To inform and promote the development of best practices for integrating cancer genetic services into primary care systems around Chicago, such as FQHCs, that serve some of the most vulnerable populations.

### KEY ACTIVITIES:

The year **2021** was a transition year for CHEI as it moved from Komen Chicago leadership to UI Cancer Center leadership.



Strategic planning was involved that led to working group meetings to develop an Environmental Scan.



Collaboration with MSHC to pilot a hereditary cancer risk assessment QI project that will help develop the best practices guide.



A working group assembled to follow up and conduct the Environmental Scan Survey.

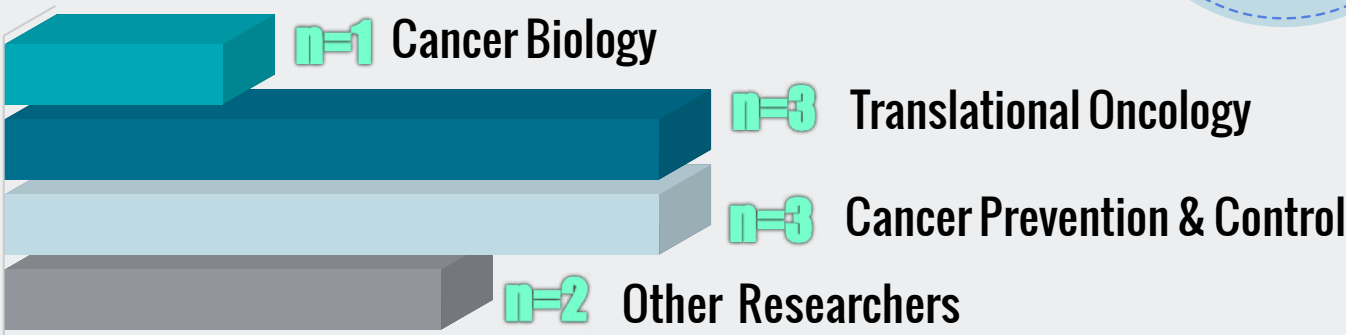




In 2021 CEHE received **9** requests for research consultations or collaborations for community-engaged research initiatives.



## RESEARCH CONSULTATIONS OUTCOMES



SIGNIFICANT RESEARCH CONSULTATIONS 2021	
I-CHER	Jan Kitajewski
Chicago Cancer Screening and Testing Access Coalition (formerly CHEI)	Genesis Rios
Cancer Caregiver Training Program	Courtney Hughes
BETTER Lifestyle Counseling for African American Women During Pregnancy	Izci Balserak Biglay
Communication interventions to overcome clinical trial disparities in cancer	Irum Khan
Lung Cancer LOI	Ameen Salahudeen
Prostate Cancer Outreach and Screening	Peter Gann

RESEARCH COLLABORATION PROJECTS 2021	
Chicago Cancer Health Equity Collaborative (ChicagoCHEC)	Jennifer Parsons
Promoting Genetic Counseling Among African American Women with Hereditary Risk for Breast Cancer (K01)	Vida Henderson
Citizen Scientists Advancing Research & Engagement (CARE)	John Stewart
Chicago UE5: Scalable Multimode Education to increase the Use of ITCR Tools by Diverse Analysts	Jeffrey Leek



# INFORMING RESEARCH

## Chicago Cancer Health Equity Collaborative (ChicagoCHEC)

The Chicago Cancer Health Equity Collaborative (ChicagoCHEC) is a National Cancer Institute comprehensive cancer partnership led by the Robert H. Lurie Comprehensive Cancer Center of Northwestern University, Northeastern Illinois University, and the University of Illinois at Chicago. The mission of the collaborative is to advance cancer health equity through meaningful scientific discovery, education, training, and community engagement.

### PROGRAM GOALS

ChicagoCHEC

To strengthen a transformational alliance between UIC, NEIU, and NU-LCC in pursuit of cancer health equity in Chicago

To initiate, conduct and support innovative bench, translational, clinical, and prevention and control-focused cancer research, with emphasis on cancer health disparities

To develop and implement cancer-related education and outreach activities generated with the engagement of underserved communities across Chicago

To coordinate research education and mentoring opportunities to recruit, retain, and advance a pipeline of underrepresented students in cancer research careers and to develop early-career faculty who will forge independent cancer research careers

To conduct an ongoing rigorous evaluation of ChicagoCHEC activities

**27** Community outreach, education, and support group events



REACHING OUT **Over 2,725**

**158+** Attendees to Virtual Community Conversations Events



### ChicagoCHEC Fellows Program

Successfully executed the Fellows Program for the second time during Summer 2021.



**101** applications and ultimately **24** selected students for the Program

Onboarded **9** fellows into the Research Education Core's Laboratory Experience and Program (LEaP).



Annual Community Forum was held in September 2021. The event, titled "**Working Together for Better: New Beginnings & New Normal in the Cancer Support and Survivorship Community**," presented a combination of panels with medical experts, community members and CHEC investigators.

## Promoting Genetic Counseling Among African American Women with Hereditary Risk for Breast Cancer (K01)

Using a randomized control trial design, the objective of this research project is to test the effectiveness of a culturally targeted video on promoting genetic counseling attendance among African American Women determined to be at high risk for breast cancer through cancer genetic risk assessment.

### PROJECT GOALS:



To compare the effects of the video and brochure on genetic counseling attendance among AA women at high risk for breast cancer.

To test how psychosocial factors (knowledge, intrinsic motivation, risk perception, distress) affect relationships between intervention exposures (video/brochure) and genetic counseling attendance

To compare the impact of intervention exposures (video/brochure) on the diffusion of knowledge through social network analysis.

### MAIN OUTCOMES:



Pre-implementation phase planned timeline activities have been accomplished.



Research Activities that are directly related to specific aims will begin in the year 2022.



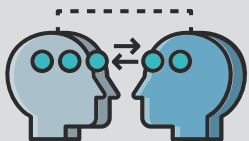
The project's PI Dr. Henderson served as a guest lecturer for UIC HPA 591 -Grant Writing for New Investigators 'K-Award Process & Tips'.



# INFORMING RESEARCH

## Citizen Scientists Advancing Research & Engagement (CARE)

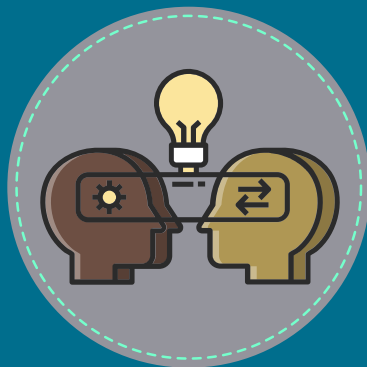
The long-term goal for CARE is to develop a sustainable Citizen Scientist training program and facilitate community empowerment through an integration model. This project's activities inform research initiatives and further our mission to partner with communities to improve cancer-related health outcomes and quality of life.



Participants in focus groups and town hall events asked a range of questions to identify their knowledge of colorectal cancer.

Study findings helped to highlight that participants had limited knowledge – using the descriptors

*"a disease that can impact anyone, despite their age" and "cancer that people pass from, if not treated properly or seek proper treatment in time".*



### FOCUS GROUPS

**3** Focus groups were conducted in March 2021 that included participation from **18** African American men, ranging in age from 30 to 69, and self-identifying as either Sexual and Gender Minority (SGM) or Non-Sexual and Gender Minority (Non-SGM).

### TOWN HALL



**254** Participants in August 2021 Town Hall Community Stakeholder Information Dissemination.

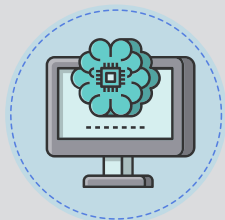
During the town hall, the research team and citizen scientists shared results and feedback about the project.

## Chicago UE5: Scalable Multimode Education to increase the Use of ITCR Tools by Diverse Analysts

Program dedicated to creating a **complete training resource** including content and both online and offline courses to **improve cancer informatics knowledge** throughout the research enterprise.

### MAIN OUTCOMES

#### YEAR 1



The project will create an informatics training network hosted at [www.itctraining.org](http://www.itctraining.org) that can be used by everyone from community members, to basic scientists, to ITCR tool developers, to medical doctors, to principal investigators to improve their knowledge of informatics.



Work in collaboration with **Project Brotherhood** to develop and implement a plan with the desired outcome to understand the principle of informatics, data collection, privacy concerns, how researchers advocate for informatics research in the community, the importance of ambassadors for genetic research and training implementation.



'Train the Trainer' events for diverse research communities through the ITN. We propose to offer train the trainer events with a focus on instructors from community colleges, minority-serving institutions, and historically black colleges and universities.

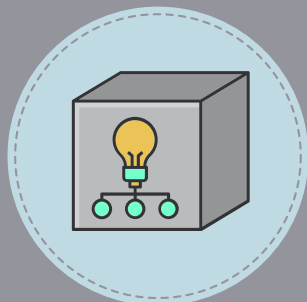


# POLICY ADVOCACY

Our policy advocacy efforts prioritize supporting policies that are focused on improving cancer prevention efforts and increasing access to quality care by addressing systemic barriers for the communities in Cook County and beyond.

## Illinois Cancer Caucus

### CANCER ACTION DAY



Annual statewide advocacy day event, focused on policies HB1745 (plan and predict drug costs) and HB1779 (access to biomarker testing).

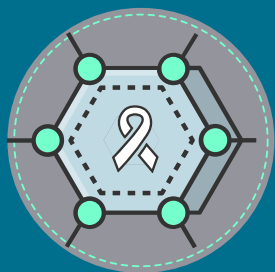
Dr. Jan Kitajewski Ph.D. was the guest speaker and he discussed the importance of biomarkers for the population in cook county and beyond.

66



PARTICIPANTS

### IL POLICY FORUM



Virtual event to provide expert testimony on policy solutions that would improve health disparities and put IL on a path to achieving health equity. Featured a panel of speakers to discuss policy solutions focused on prevention and research to reduce cancer inequities.

Dr. Yamile Molina Ph.D. was a speaker at the event. She addressed the accountability of implementing health equity policies.

103



PARTICIPANTS

### CANCER CAUCUS BRIEFING



Policy-driven event focused on getting our representatives involved in the work of cancer research.

Hosted by ACS CAN in partnership with the University of Chicago, Northwestern University, and UI Cancer Center.

Speakers from UI Cancer Center included Dr. Marcelo Bento Soares Ph.D. and Dr. Jan Kitajewski Ph.D.

35



PARTICIPANTS

# POLICY ADVOCACY

## Illinois Biomarker Bill - House Bill HB1779

The new HB1779 will expand insurance coverage of biomarker testing. Biomarkers, which are found in blood, other bodily fluids, or tissues, can determine the precise location of a disease or detect the disease in its earliest stage, which can provide better treatment outcomes for patients.

### CONTRIBUTIONS

The UI Cancer Center is among nearly **25** healthcare organizations supporting and contributing the HB1779.

UI Cancer Center Director, Dr. Jan Kitajewski, Ph.D., has been an active supporter of this new Illinois bill.



### EFFORTS

Dr. Jan talk about the benefits of this bill on WJPF radio's Morning Newswatch program:

*"Treating cancer early is much more efficient and leads to fewer costs in the complexity of cancer care. Catching cancer late, when treatment is difficult, takes the individual down an odyssey of expensive treatment. It's pretty straightforward to see the cost of detecting cancer early".*



### PURPOSE

With this bill, biomarker testing must be covered for "the purposes of diagnosis, treatment, appropriate management, or ongoing monitoring of an enrollee's disease or condition when the test is supported by medical and scientific evidence".

Reduce health disparities and improve outcomes for cancer patients by providing access to biomarker testing and targeted therapies. Unfortunately, not all Illinois communities are benefitting from the latest advancements in biomarker testing and precision medicine. Communities of color and people living in rural communities are less likely to receive biomarker tests.

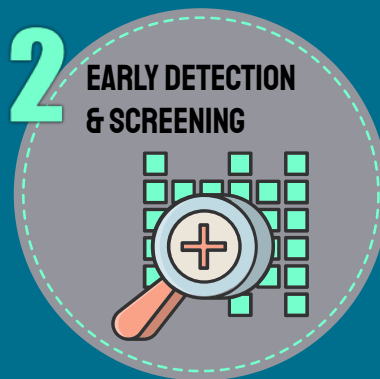


## Illinois Cancer Plan - House Resolution HR0675

The resolution HR0675 urges legislators to support and promote the 2022-2027 Illinois Comprehensive Cancer Control Plan. This plan includes a section, “Community Engagement Strategy to Understand Cancer Disparities in Illinois,” which highlights the experiences of Illinoisians impacted by cancer as well as recommendations for funding and research priorities.

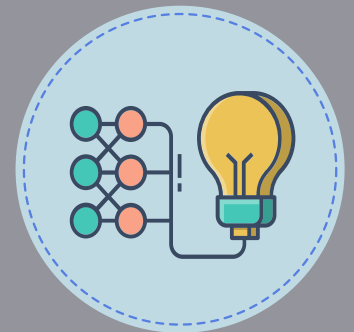
## PRIORITY AREAS

The resolution highlights the plan’s three priority areas:



## EFFORTS

Efforts on the resolution began as a collaboration with the American Cancer Society and the Health Affairs Advocacy and Government Relations Office of the Vice-Chancellor for Health Affairs at the University of Illinois Hospital & Health Sciences System.



## UI CANCER CENTER CONTRIBUTIONS



Development and implementation of the 2022-2027 Illinois Comprehensive Cancer Control Plan and Community Engagement Strategy.

# 2021 COMMUNITY PARTNERSHIPS

Thank you to all of our active partners in 2021! A special thank you to the Mile Square Health Centers and Community Based Practice initiatives. We could not do our work without your collaboration and expertise.

**37th Ward Alderman Emma Mitts**

**A Silver Lining Foundation**

**AKArama foundation**

**ALAS-Wings**

**Alivio Medical Center**

**AllianceChicago**

**Amber Coalition**

**American Cancer Society**

**American Cancer Society Cancer Action Network, Inc. (ACS CAN)**

**American Lung Association in Greater Chicago**

**Aunt Martha's**

**Austin Coming Together**

**Bristol Myers Squibb Company**

**Bristol Myers Squibb Foundation**

**Cancer Care Specialists of IL (CCSI)**

**Casa Norte**

**Central Illinois Area Health Education Center (AHEC)**

**Chicago Department of Public Health**

**Chicago Family Health Center**

**Chicago Hispanic Health Coalition**

**Chinese American Service League**

**Chris Draft Foundation**

**Commissioner Brandon Johnson**

**Community Health and Emergency Services (CHESI)**

**Consulate General of Mexico in Chicago**

**Cut It Out Curt**

**Decatur Memorial Hospital**

**Department of Family and Support Service (City of Chicago)**

**Enlace Chicago**

**Equal Hope**

**Family Focus Cicero**

**Fathers Who Care**

**Gilda's Club Chicago**

**Gospel Run**

**Governors State University**

**Greater Chicago Food Depository**

**Hair 4 U Salon**

**Healing Temple Church**

**Howard Brown Health**

**Humboldt Park Health**

**Illinois Breast and Cervical Cancer Program**

**Illinois Cancer Partnership**

**Illinois Department of Public Health**

**IMAN Community Health Center**

**Instituto del Progreso Latino (INSTITUTO)**

**John H. Stroger Jr, Cook County Health and Hospital Systems**

**Latinos Progresando**

**Lawndale Christian Health Center**

**Legacy Training**

**Love Thy Neighbor in Austin**

**Make a Wish Illinois**

**McCormick YMCA**

**Meridian Health**

**Michael Reese Foundation**

**Midway Broadcasting (WVON/WRL)**

**Molina Healthcare of Illinois**

**Mount Olivet M.B. Church**

**Mount Sinai - Helping Her Live program**



# 2021 COMMUNITY PARTNERSHIPS

NAACP Illinois State Chapter
NAACP of Illinois Alexander/Pulaski County Branch
Northeastern Illinois University
Oak Street Health
Patient Advocate Foundation
Peer Plus Education & Training Advocates
Pilsen Neighbors Community Council (PNCC)
Project Brotherhood
Puerto Rican Cultural Center
Resurrection Project - ELLAS program
Robert H. Lurie Comprehensive Cancer Center of Northwestern University
Centro San Bonifacio
Sangamon County Health Department
Sidney Hillman Health Center
Sisters Working It Out
South Austin Neighborhood Association
Southern 7 Health Department
St. Clair County Health Department
Puerto Rican Cultural Center
St. Luke's United Church of Christ
Susan G. Komen
Susan G. Komen Memorial Affiliate
Tabitha House
The Blue Hat Foundation
The Community Builders/TCBINC
The Leukemia and Lymphoma Society
The Loretto Hospital
The Timothy Francis Jones Foundation
Triage Cancer
University of Chicago Comprehensive Cancer Center
Univision
Us Too
Wellness House
Westside Health Authority
WOT Foundation, Inc.



UNIVERSITY OF ILLINOIS  
CANCER CENTER

[cancer.uillinois.edu](http://cancer.uillinois.edu)



BY UI CANCER CENTER

Developed by Ana Williams MPH, MHA, DDS

[awilli97@uic.edu](mailto:awilli97@uic.edu)





UNIVERSITY OF ILLINOIS  
CANCER CENTER

[cancer.uillinois.edu](http://cancer.uillinois.edu)