



UNIVERSITY OF ILLINOIS
CANCER CENTER

Community Outreach, Engagement, & Health Equity Annual Report 2020



Reprint permission obtained from
mural artist: Dwight White

Contents

Messages from the Team - 1

Overview - 3

Catchment Area - 4

Community Outreach & Engagement Aims - 5

Community Benefits Summary - 6

COVID-19 Response - 7

Commission on Cancer - 8

Community - Academic Partnerships - 9

Outreach, Education & Services - 11

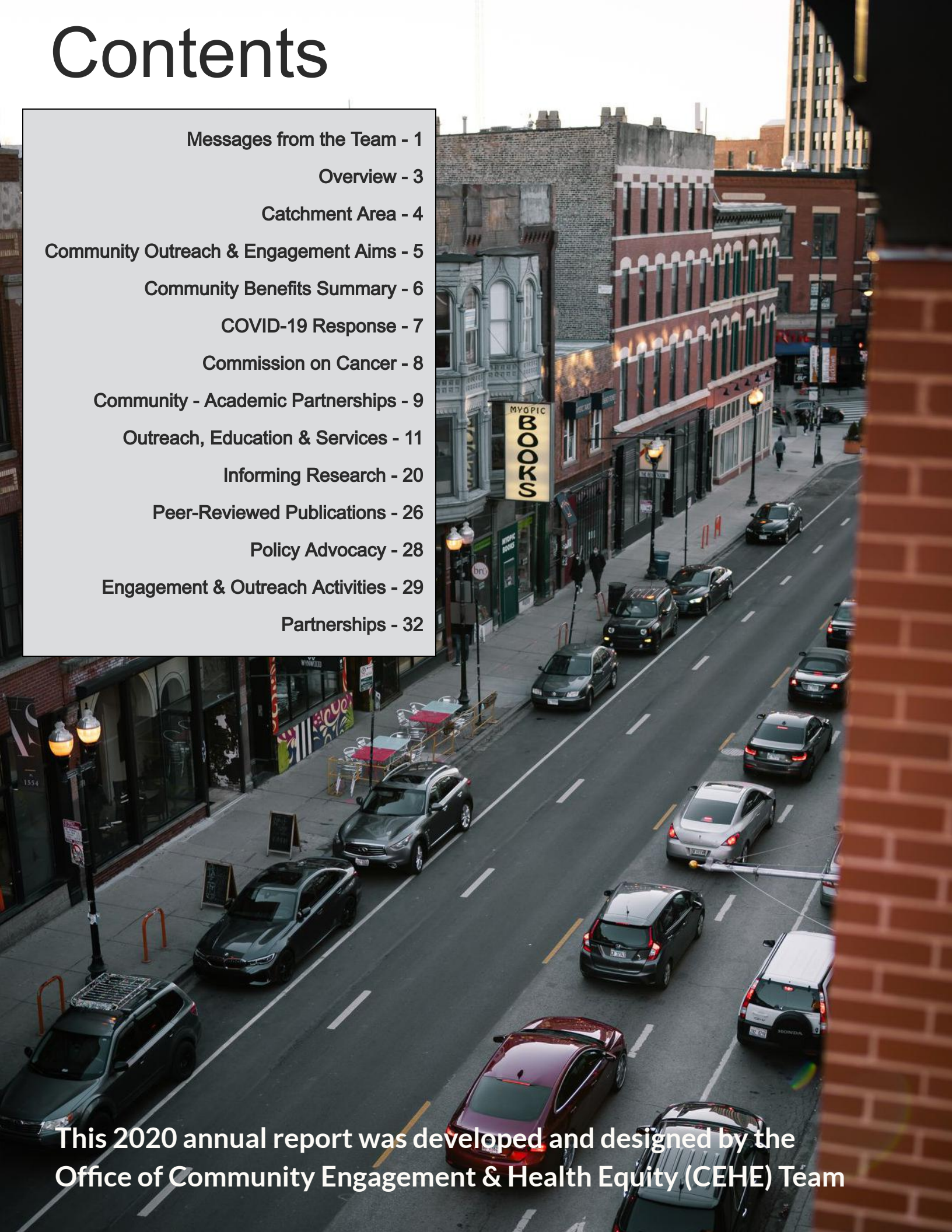
Informing Research - 20

Peer-Reviewed Publications - 26

Policy Advocacy - 28

Engagement & Outreach Activities - 29

Partnerships - 32



This 2020 annual report was developed and designed by the
Office of Community Engagement & Health Equity (CEHE) Team

MESSAGES FROM THE TEAM

As we reflect on 2020, we understand that our work to improve the health of our communities is more important than ever. As the outreach and engagement team, in a community focused cancer center, at a public academic institution, we are directly addressing the unequal burden of cancer in our catchment area and beyond. We are uniquely positioned to address cancer disparities in our communities, from developing culturally appropriate cancer prevention education to creating spaces for advocates to share community needs that will inform the next research question. This work is only possible with a committed team who cares about the health outcomes of our communities!

Messages from the team:

A special thank you to our funders and community partners who have made our work possible. A sincere gratitude to our community members for bestowing your trust on us and giving us the opportunity to serve you.

Nasima Mannan.

The Blue Hat Foundation

Thank You for all the hardwork you do by advocating for Colorectal cancer awareness to make sure individuals get screened. Your resilience to overcome obstacles is remarkable to make sure lives are being changed and saved. It is a pleasure to work with your team.

-Barbara Williams

Dear Gilda's Club Chicago,

Thank you for all you do to ensure that no one has to face cancer alone. We are beyond grateful to count on your support!

- Jeanette

Thank you for your work and dedication to improving health equity. This past year was a challenge, but I am looking forward to your continued partnerships as we improve cancer outcomes in our communities!

Sincerely,
Leslie Carnahan

Un saludo muy especial a un gran colaborador y defensor de la comunidad latina como lo es la Iglesia San Lucas. Gracias por el apoyo espero seguir trabajando arduamente con ustedes.

Maria

Continued...

A special thank you to all of our community partners and advocates who have continued to work behind the scenes to keep our communities healthy! We hope to see you again soon!
-Erica

I would like to Thank
All of our Community
Partnerships AND "The Lonetto
Hospital." Let us continue
to provide ^{the} NEEDED SERVICES
AND AWARENESS to our underserved
COMMUNITIES
Theresa

Sisters working it out

Thank you for all the hardwork
you do for making sure individuals
get screened for their mammograms.
I admire all the ladies apart of
SWIO from survivors to staff that
help change and save lives. Thank
you for all your referrals. It is a
pleasure to work with your team.
-Barbara Williams

Humboldt Park Health

It has been a pleasure to
work with your team to
provide access to cervical
cancer screenings for
uninsured and underinsured
women. We look forward to
our continued partnership!
-Jeanette A Gonzalez

There's no limit to what we can do when
we work together! Thank you for being
our partners in striving for health equity!
♡, Vida

The work reflected in this report could not be possible without the great work of committed and passionate team members. Thank you!

Oluwaseyi Samuel Adeleke, Christine Adley, Leslie Carnahan, Ifeanyi Beverly Chukwudozie, Carla Luisa Da Goia Pinto, Jeanette Santana Gonzalez, Abhishek Gowda, Ivanhoe Hall, Tamara Hamlish, Vida Henderson (CEHE Director), Talia Holzman Castellands, Noami Huerta, Ose Ituah, Monet Jones, Le'Chaun Kendall, Jessica Madrigal, Nasima Mannan, Erica Martinez (CEHE Associate Director), Melissa Martinez, Theresa Mobley, Miguel Negrete, Jennifer Newsome, Maria Olivero, Hope Bedwell, Kimberly Richardson, Sarah Rittner, Tonya Roberson, Kimberly Silva, Ryan Stratton, Paola Torres, Karriem Watson (Associate Director for Community Outreach and Engagement), Ana Williams, and Barbara Williams.

OFFICE OF COMMUNITY ENGAGEMENT AND HEALTH EQUITY OVERVIEW

The University of Illinois Cancer Center's (UI Cancer Center) Office of Community Engagement and Health Equity (CEHE) is a unique community-centered office that engages communities within our catchment area and beyond to decrease cancer burden and increase cancer awareness and access to early detection and prevention. The CEHE team disseminates the needs of community members and informs research responsive to those needs. CEHE builds relationships with community partners, conducts best practices through community education, disseminates project outcomes to communities and UI Cancer Center programs, and advocates for policy changes that focus on improving cancer care in our communities. We utilize an integrated population health and health disparities framework to ensure that those outcomes inform UI Cancer Center programmatic research. This annual report reflects the projects and initiatives that the team leads and implements in collaboration with cancer center members, community partners and patients.

Our Vision

To create equitable access to cancer awareness and cancer care in minority and underrepresented communities.

Our Mission

To be a resource in developing, supporting, and integrating community focused cancer prevention initiatives and research to reduce the burden of cancer inequities.

Our Values

Community- Centered

We place the community at the forefront of service endeavors and fostering research. We understand that to optimize positive health outcomes, communities are integral to all phases of research.

Diversity

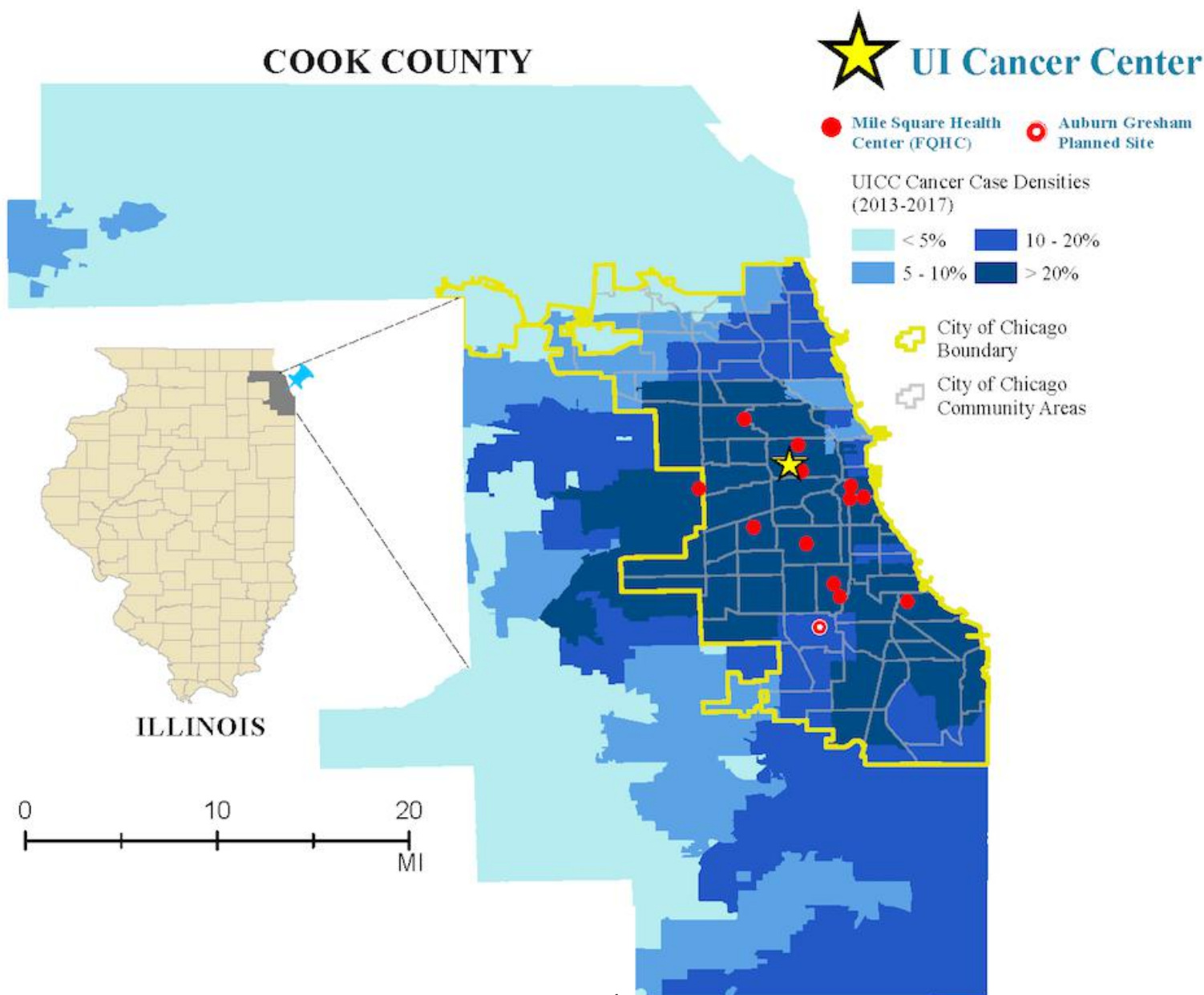
We represent the diverse communities that we serve and are committed to providing a space for understanding, respecting and valuing people from all backgrounds.

Collaborative

We engage in multi-institutional, transdisciplinary partnerships with community stakeholders to advance cancer health equity.

CATCHMENT AREA

The UI Cancer Center defines its catchment area as Cook County, located in northeast Illinois and including the City of Chicago. The catchment area spans 945 square miles and is populated by approximately 5.2 million racially, ethnically, and culturally diverse residents from urban communities. More than half of catchment area residents (58%) are racial/ethnic minorities, with African Americans and Hispanics comprising 23.0% and 25.5%, respectively. More than 40% of Illinois residents live in Cook County. Cook County is identified by the Health Resource and Services Administration as a Medically Underserved Area, indicative of high levels of healthcare need due to low volume of primary, dental, or mental healthcare providers, high infant mortality, high poverty, and/or high elderly populations, among other needs. It is precisely in these areas where UI Cancer Center anchors its Community Outreach and Engagement efforts, enhanced by its partnership with the Mile Square network of federally qualified health centers.



COMMUNITY OUTREACH & ENGAGEMENT SPECIFIC AIMS

We are dedicated to conducting best practices related to community-based education to increase cancer screening, prevention, and navigation across the cancer continuum of care, from early detection to survivorship.

Catchment Area

Define and monitor the cancer burden within the catchment area and disseminate information to researchers, clinicians, and community stakeholders to inform the development and implementation of research and community responsive interventions that address the needs of the catchment area and beyond

Outreach, Education & Services

Promote and conduct community evidence-based screening and navigation facilitated through community and academic partnerships

Inform Research

Inform and foster community-engaged research across UI Cancer Center's basic, clinical, and population science programs

Policy Advocacy

Support the development, implementation, and dissemination of policy and advocacy initiatives that advance cancer health equity for the UI Cancer Center catchment area and beyond

Community Benefits Summary

2020 Cancer Outreach and Engagement

5,949



Community Members Engaged

90 engagement and outreach activities providing cancer awareness, education, and prevention information virtually and in person

10,000 +

Listeners reached through monthly WVON radio programming



People Screened for Cancer

720



Cancers Diagnosed

8

\$50,000+

Invested

in 11 organizations, including 2 safety net hospitals through community implementation projects



70 Community Partnerships

Each partnership was instrumental in project implementation, community dissemination, outreach and engagement



COVID-19 *RESPONSE*

The COVID-19 pandemic changed our lives in so many ways, including how we approached cancer education and prevention. Our team quickly adapted from in-person to virtual and telephone to connect with patients and community members. This change allowed team members to interact one on one and allowed more time to provide screening information, rescheduling screening appointments, and to share additional resources to address food insecurity and testing information. With generous funding from the Bristol Myers-Squibb Foundation COVID-19 Supplement, food baskets and Personal Protective Equipment (PPE) was provided to community members through collaboration with Mile Square Health Center.

250
HOUSEHOLDS



were delivered:

500 Meals
2500 Masks
500 Sanitizers

7000
INDIVIDUALS



received:

**personal protection
equipment through 27
distribution events**

596



**Wellness
Check Calls**

\$10,000 FOR
CANCER
SURVIVORS



**Assisted 20 survivors
with applying for \$500
emergency food
assistance support**

50



**Survivors linked to
financial assistance
programs**

6



**Webinars conducted
on COVID-19
education**

The Commission on Cancer (CoC) is a consortium of professional organizations dedicated to improving survival and quality of life for cancer patients through standard-setting, which promotes cancer prevention, research, education, and monitoring of comprehensive quality care.

UI Health is a CoC accredited cancer program. The UI Cancer Center Office of Community Engagement and Health Equity was responsible for the 2020 initiatives that successfully met Standards 8.1, 8.2 and 8.3.

Standard 8.1 - Addressing Barriers to Care

Each calendar year, the cancer committee identifies at least one patient, system, or provider-based barrier to accessing health and/or psychosocial care that its patients with cancer are facing and develops and implements a plan to address the barrier.

Disparities identified:

- Tobacco cessation and lung cancer prevention
- Colorectal cancer screening
- Breast cancer screening

Barriers identified:

- Transportation
- Insurance and financial counseling

Resources used to identify disparities and barriers:

- University of Illinois Cancer Center 2019 Community Needs Assessment
- 2019 Mile Square Community Needs Assessment

Standard 8.2 - Cancer Prevention Event

The cancer committee holds at least one event each year focused on decreasing the number of diagnosis of cancer. Prevention events focus on at least one of two intended results:

- (1) a change in behavior that reduces the risk a cancer will develop, and/or
- (2) an increase in participants' knowledge and awareness of cancer risks.



Standard 8.3 - Cancer Screening Event

The cancer committee holds at least one event each year focused on decreasing the number of individuals who present with late-stage cancer. It is the recommended, but not required, that cancer committee partner with a community organization to hold the event.

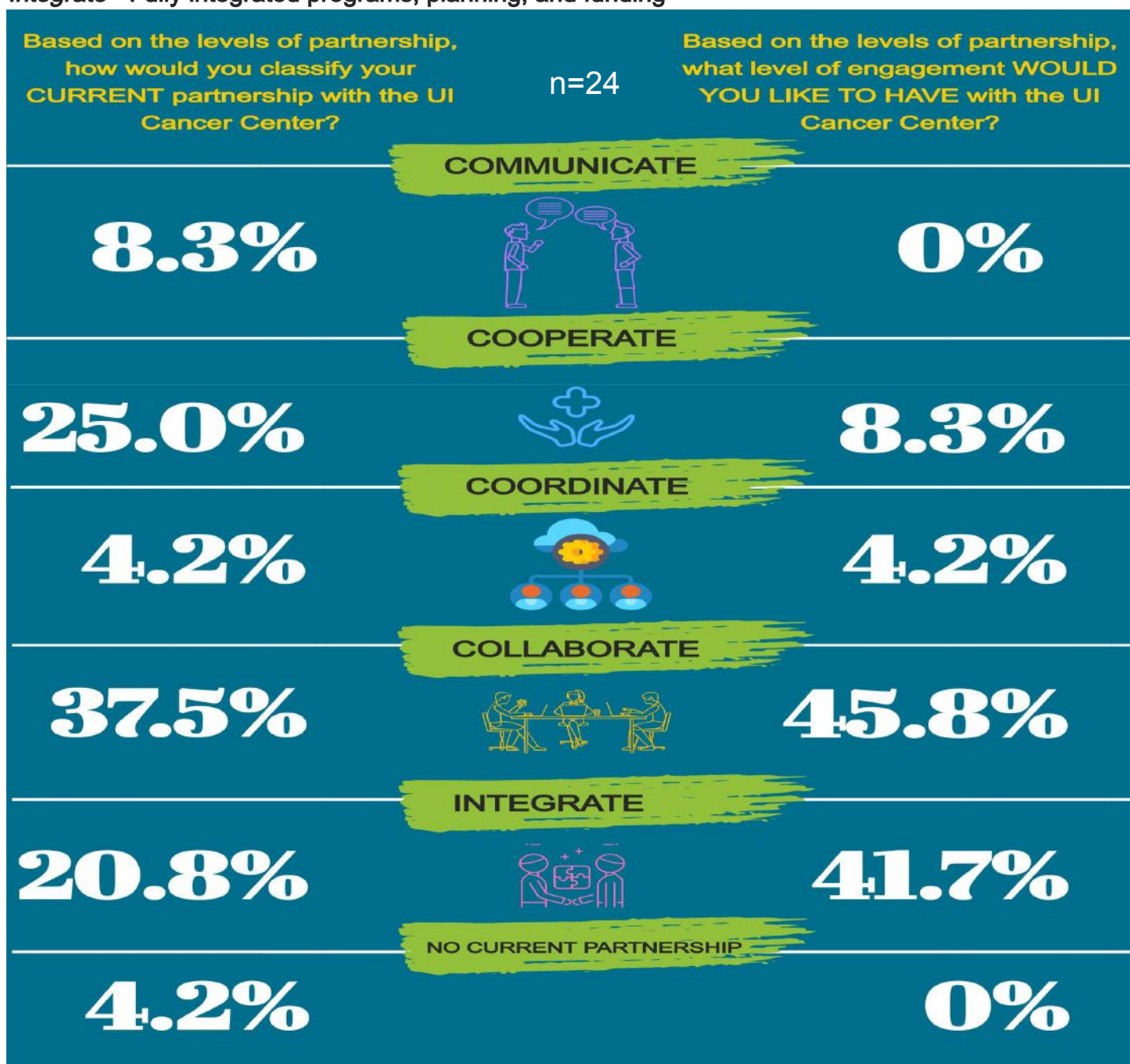
We hosted multiple events to provide education to increase knowledge and awareness of cancer risks and motivate individuals to get screened. However, from April through December all screening events were cancelled due to COVID-19.

Partnership Assessment Survey

In 2020, we developed and disseminated a Partnership Assessment Survey to 46 community partners to assess the quality and productivity of partnerships with the Community Engagement and Health Equity Office, strengthen bidirectional engagement, and to understand the health and cancer care priorities of the communities we serve. Twenty-four partners responded.

Levels of Community Partnerships*

1. *Communicate* - Inter-agency information sharing (e.g., networking)
2. *Cooperate* - Informal interaction on specific discrete activities or projects
3. *Coordinate* - Organizations systematically adjust and align work with each other for greater outcomes
4. *Collaborate* - Longer team interaction based on shared mission and goals; involves shared decision-making and shared resources
5. *Integrate* - Fully integrated programs, planning, and funding

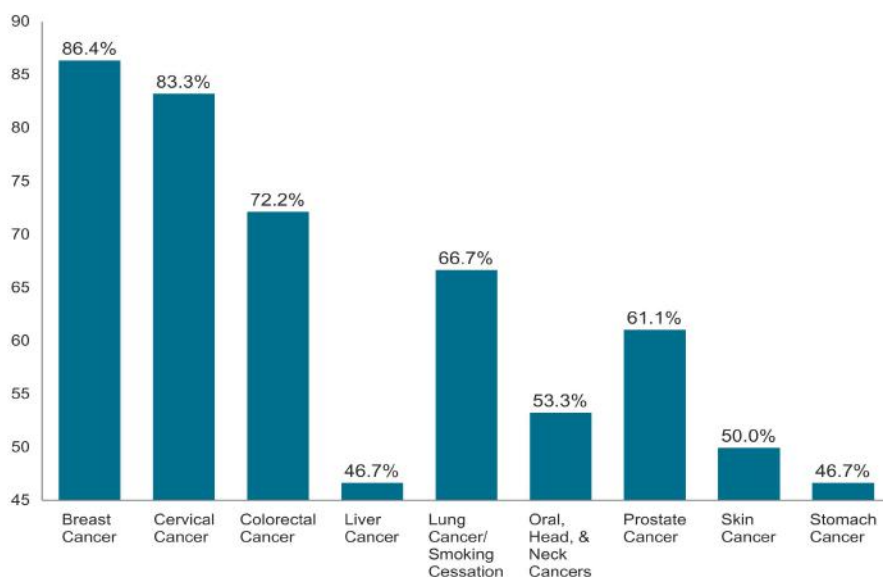


COMMUNITY - ACADEMIC PARTNERSHIPS

Partnership Assessment Survey (n=24)



Cancer Focus of Partners



"CEHE engaged with me, on behalf of Patient Advocate Foundation, in an exploratory project concept conversation. As a part of this brainstorming discussion, both entities were able to identify not only immediate resources that could be leveraged to move the concept forward, but also committed to seeking out additional resources to fully pilot the concept. This demonstrates UI Cancer Center CEHE Office's willingness to explore not only new ideas, but outreach to new partners to respond to the needs of their patient community."

-Shonta Chambers, Patient Advocate Foundation

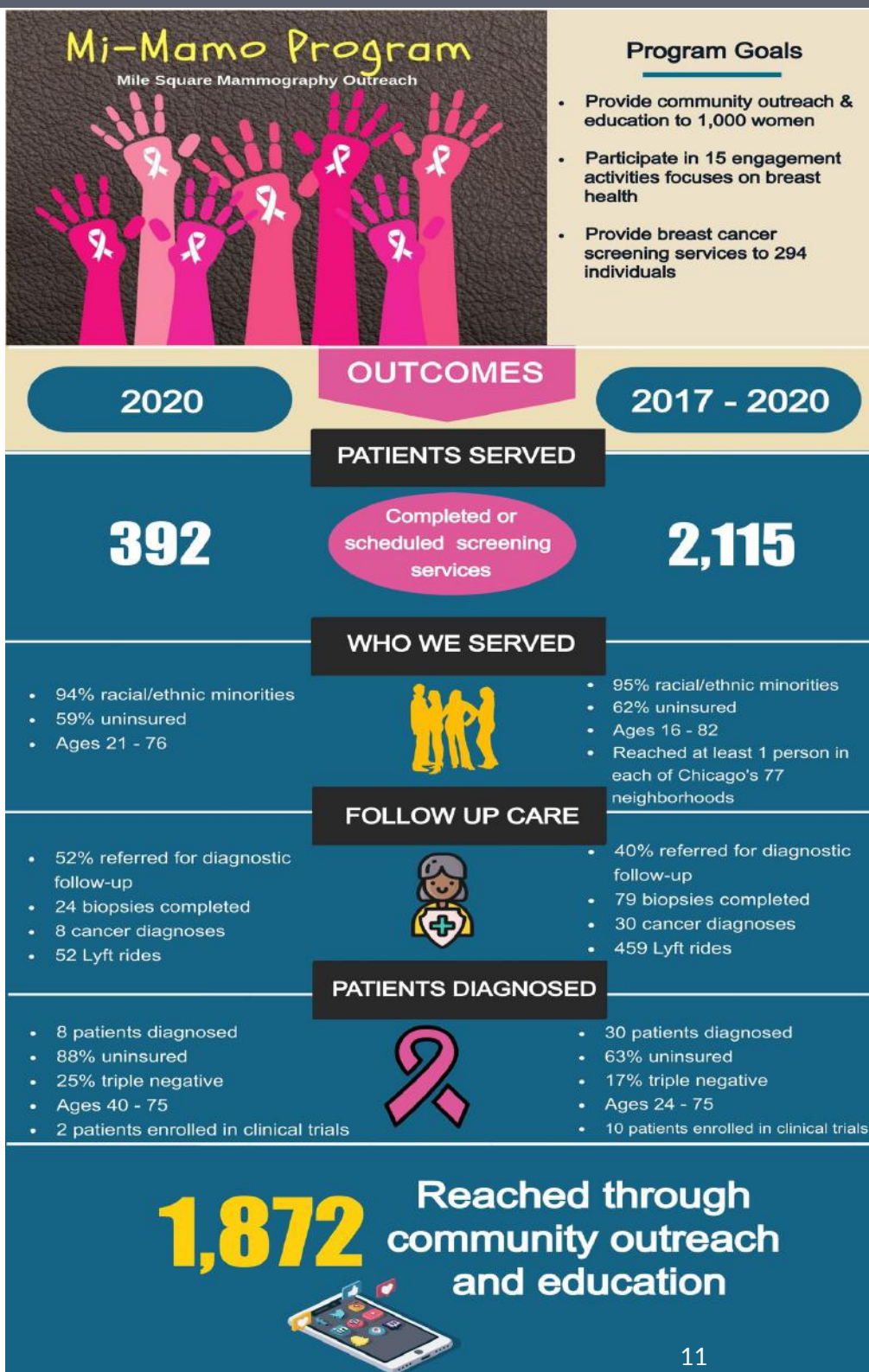
OUTREACH, EDUCATION, & SERVICES

Mile Square Accessible Mammogram Outreach and Engagement (Mi-MAMO)

Investigators: Vida Henderson, PhD PharmD, MPH, MFA; Lauren Green, MD; Susan Hong, MD, MPH; Nancy Miranda, MD; Nicole Gastala, MD; Nasima Mannan, MPH

Project Team: Paola Torres, MPHc; Miguel Negrete, MPH, PhDc; Le'Chaun Kendall, MPH; Alexandra Larkin, MPH; Erica Martinez, MBA, MPH

The Mi-MAMO program was implemented to reduce barriers and increase breast cancer screening and follow-up to breast health services for under-resourced and uninsured/underinsured women. The program mitigates barriers to services by providing free breast cancer screening services and patient navigation at the Mile Square Health Center (MSHC) Federally Qualified Health Centers. This program is possible through a partnership between the UI Cancer Center, UI Health, Mile Square Health Centers, numerous community partners and the primary funder, the Chicago Department of Public Health. The program has been in existence since 2015 and externally funded since 2017.



"I mean I was scared at the beginning, but you know they answered all my questions. They were nice. You know they walked me through the process. They talked to me about what was gonna happen. They were pretty much helpful."



"I felt relieved because you know I was gonna be able to get my mammogram done ASAP."



"All the ladies I've ever had experiences with, they've all been really pleasant to me, helpful, and very nice. They've always been very nice to me. We always end up laughing and giggling."

OUTREACH, EDUCATION, & SERVICES

Mile Square Adult Smoking Cessation (Mi-QUIT II)

Investigators: Karriem Watson, DHS, MS, MPH; Vida Henderson, PhD, PharmD, MPH, MFA; Min Joo, MD; Nicole Gastala, MD; Lori Ann Wilken, MD

Project Team: Nasima Mannan, MPH; Miguel Negrete, MPH, PhDc; Paola Torres, MPHc

The Mi-Quit II program aims to reduce smoking among tobacco users in high-risk community areas through shared decision making and linkage to personalized cessation services. Community members that are eligible for lung cancer screening are linked to healthcare system for screening services. Implemented at MSHC, the program mitigates barriers to access by providing free smoking cessation counseling, nicotine replacement therapy (NRT) and patient navigation to link patient to services, such as Illinois Tobacco Quitline and patient primary care provider. This program is a collaboration through a partnership between the UI Cancer Center, UI Health, MSHC, American Lung Association, American Cancer Society and numerous community partners. It is funded through Chicago Department of Health.

Program Goals

- Engage 220 community members to increase awareness of and access to evidence-based tobacco cessation programs
- Enroll 66 smokers in the Illinois Tobacco Quitline (ITQL), using motivational interviewing and shared decision making
- Participate in 2 community outreach activities
- Increase Mile Square tobacco quit rate

662 patients received 1-on-1 smoking cessation outreach

108 patients accepted smoking cessation counseling

- 86% racial/ethnic minorities
- 7% uninsured
- Ages 20 - 74

Engaged 110 community members through 2 community webinars



93 individuals referred to tailored smoking cessation support services

Nobody Quits Like Chicagoland

- Discussion about city-wide smoking cessation efforts and best practices to help patients quit smoking within federally qualified health centers
- Hosted by Illinois Primary Care Association in collaboration with UI Cancer Center, American Lung Association, Illinois Department of Public Health, and Mile Square

Back to Health during COVID-19

- Conversation with healthcare providers on staying physically and mentally healthy during the COVID-19 pandemic
- Conducted in collaboration with UI Cancer Center, ChicagoCHEC, Mile Square, and the Bristol Myers Squibb Foundation

57

referred to the Illinois Tobacco Quit Line

12

referred to UI Health Lung Clinic

15

referred to PCP at Mile Square

9

referred to Freedom from Smoking clinics with the American Lung Association

9 referred to Low-Dose Computed Tomography (LDCT) screening

OUTREACH, EDUCATION, & SERVICES

Southside Colorectal Cancer Initiative (Mi-CARE)

Investigator: Karriem Watson, DHS, MS, MPH

Project Team: Nasima Mannan, MPH; Miguel Negrete, MPH, PhDc; Paola Torres, MPHc

The Mi-CARE program aims to reduce colorectal cancer screening burden on the Southside through increasing colorectal cancer screening at three MSHC locations (South Shore, Englewood and Back of the Yards). The program uses patient navigation to address barriers to screening among eligible members. The program is made possible through collaboration with UI Cancer Center, UI Health, MSHC, BMS and multiple other partners, and funded by American Cancer Society.

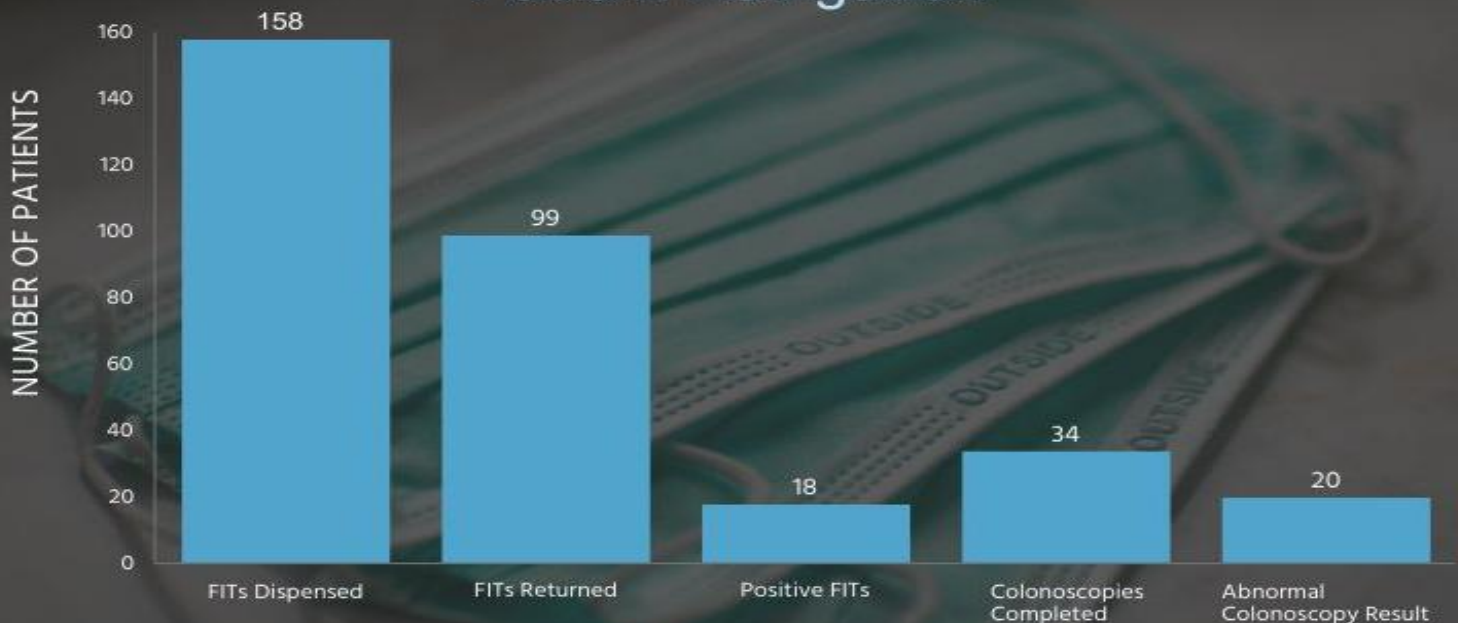
Program Goals:

- Provide targeted outreach and colorectal cancer screening education to 200 patients at Back of the Yards, Englewood, & South Shore Mile Square clinics
- Dispense 200 fecal immunochemical tests (FIT) Kits
- Provide colorectal cancer screening outreach and education to 100 community members
- Engage 7 Mile Square providers in colorectal cancer screening quality improvement initiatives

370

Mile Square patients and community members received targeted colorectal cancer screening outreach and education

Colorectal Cancer Screening Outcomes using Remote Patient Navigation



OUTREACH, EDUCATION, & SERVICES

UI Cancer Screening, Access, Awareness, & Navigation (UI CAAN Colorectal)

Investigators: Karriem Watson, DHS, MS, MPH; Vida Henderson, PhD, PharmD, MPH, MFA

Project Team: Jeanette Gonzalez, MS; Miguel Negrete, MPH, PhD; Paola Torres, MPHc

UI CAAN Colorectal, funded by Bristol-Myers Squibb Foundation (BMSF), aims to increase colorectal cancer screening and awareness in the Chicago South Shore and Englewood communities. The program focuses on under-represented minority populations including sexual and gender minorities. UI CAAN distributes fecal immunochemical tests (FIT) at Mile Square South Shore and Englewood clinics by implementing a community distribution approach of the tests in partnership with community health workers, barbers and beauticians. This engagement strategy assures involvement of our communities to increase colorectal cancer awareness and screening.

UI CAAN Colorectal

PROGRAM GOALS



Increase colorectal cancer screening and awareness among high risk populations on the South Side of Chicago.



Conduct community based education and screening at multiple community events.



Navigate 200 individuals to screening annually.

OUTCOMES



Participated in 13 community events conducting community based colorectal cancer education.

Reached 2,059 people in community events.

Navigated 183 individuals to colorectal cancer screening.

OUTREACH, EDUCATION, & SERVICES

UI Cancer Screening, Access, Awareness, & Navigation (UI CAAN Cervical)

Investigators: Vida Henderson, PhD, PharmD, MPH, MFA; Leslie Carnahan, PhD, MPH; Karriem Watson, DHS, MS, MPH

Project Team: Jeanette Gonzalez, MS; Theresa Mobley; Maria Olivero

UI CAAN Cervical, funded by Bristol-Myers Squibb Foundation (BMSF), aims to improve awareness of cancer disparities in underserved communities on the west side of Chicago. This includes addressing the elevated rates of cervical cancer and lower rates of cervical cancer screening and prevention in two Chicago West Side communities, Austin and Humboldt Park in partnership with Humboldt Park Health (formerly Norwegian American Hospital) and The Loretto Hospital.

UI CAAN CERVICAL

PROGRAM GOALS



Provide cervical cancer screening to 100 women at each community hospital



Conduct cervical cancer /HPV community based education at multiple community events



Expand community partnerships

OUTCOMES



OUTREACH



SCREENING



EDUCATION



PARTNERSHIPS

4 New partnerships were developed:

- St. Lukes United Church of Christ
- Centro San Bonifacio
- West Side Health Authority
- St. Luke Missionary Baptist Church

17 Community events participation, engaging **857** people

39 Women were screened completing their Pap Smears

70 Women at Humboldt Park Health and The Loretto Hospital received individual education on cervical cancer screening and HPV

250 Well-being checks were conducted during the peak of the COVID-19 pandemic, providing resources to women enrolled in the program

Illinois Department of Public Health Community Navigation Toolkit & Health Systems Intervention

Investigators: Vida Henderson, PhD, PharmD, MPH, MFA; Brenikki Floyd, PhD, MPH; Arden Handler, DrPH

Project Team: Ana Williams, MPH, MHA, DDS; Paola Torres, MPHc; Barbara Williams, MPH

IDPH COLLABORATIONS

Collaborative partnership between the Illinois Breast and Cervical Cancer Program (IBCCP) and UI Cancer Center

COMMUNITY NAVIGATION TOOLKIT PROJECT



Learning Program aimed at guiding community based navigators in conducting best practices for breast and cervical cancer screening navigation

HEALTH SYSTEMS INTERVENTION PROJECT



Partnership Program with the UIC School of Public Health and the Mile Square Quality Improvement Team to help increasing breast and cervical cancer screening rates

PROGRAM GOALS

Develop and disseminate a community-based navigation model based on breast and cervical cancer screening programs for IBCCP Navigation Pilot Program lead agencies



Develop a Community Navigation Toolkit Program to help community navigators meet the needs of their communities and health care delivery system

Implement evidence-based interventions (EBIs) at the Mile Square Health Centers based on the assessment of the health system's workflow, needs, and assets



Assess the impact of the different EBIs on breast and cervical cancer screening rates at Mile Square Health Center system

PROGRAM OUTCOMES

Implementation of **3** collaborative learning workshops with the IBCCP community navigators focused on: 'Community Engagement and Partnerships', 'Barriers Assessment and Reduction', and 'Provider Assessment and Feedback'

Development of a **NEW** Community Navigation Toolkit instrument. The toolkit offers guidance and facilitates capacity building for the implementation of community navigation services

Assessment and Incorporation of feedback and lessons learned into the **PLANNING PROCESS** for the Community Navigation Toolkit Annual Training



Collection and validation of the 2019 cancer screening for all clinic sites



Development of culturally tailored reminders and educational cards for breast and cervical cancer screenings



Implementation of the key Informant Interviews and evaluation processes at both Mile Square Health Center clinic sites, Englewood and South Shore



Coordination of partners and modify the project's processes and determining strategies to continue implementing the project due to the COVID-19 pandemic

OUTREACH, EDUCATION, & SERVICES

Young And A Survivor (YAAS!) Network for Health Equity for Young Breast Cancer Survivors

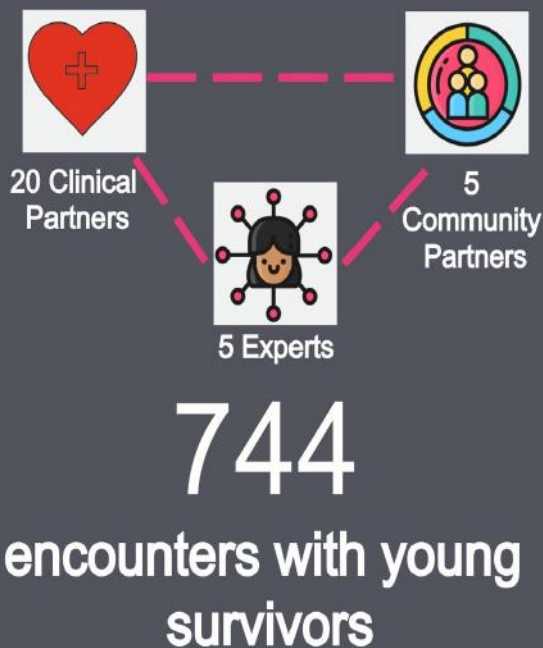
Investigators: Tamara Hamlish, PhD; Susan Hong, MD; Ardith Z. Doorenbos, PhD, RN, FAAN

Project Team: Christine Adley; Talia Holzman Castellands, MPH; Sarah Rittner, MA

Program Goals

- Establish a sustainable network of clinicians, community, and survivor partners to support the specific needs of young women in Chicago affected by breast cancer and their co-survivors
- Identify 3 policy, systems and environmental change strategies to guide the work of the YAAS! network
- Conduct an environmental scan of resources available to young women affected by breast cancer in order to identify strengths and gaps in resources

NETWORK



OUTREACH



175

outreach, navigation, psychosocial health, education and training, & health and wellness events or activities



Unveiled, a networking event hosted by Sisters Working it Out (SWIO) that included a photo shoot for six young survivors and a virtual exhibit where they shared their stories



Spanish-language monthly support group for young survivors hosted by ALAS-Wings



Monthly Nutrition classes and cooking demonstrations with cancer-fighting practical tools and recipes hosted by Wellness House



Insurance & Finance Intensive training for oncology health care professionals and advocates on health and disability insurance and finances hosted by YAAS! partner Triage Cancer reached 74 healthcare providers

OUTREACH, EDUCATION, & SERVICES

Citizen Scientists Advancing Research & Engagement (CARE) for African American Men in Clinical Trials

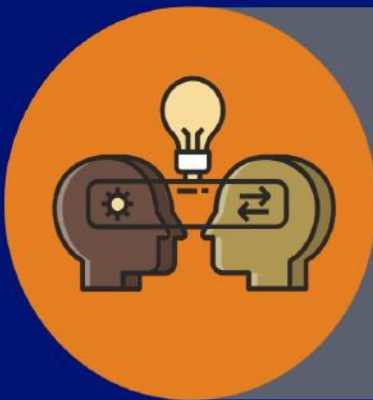
Investigators: John Stewart, MD and Marcus Murray, MPH

Project Team: Barbara Williams, MPH

The long-term goal for CARE is to develop a sustainable Citizen Scientist training program and facilitate community empowerment through an integration model. This project's activities inform research initiatives and further our mission to partner with communities to improve cancer-related health outcomes and quality of life.

Program Goals

- To engage African American Men as Citizen Scientists to improve cancer screening and research participation
- To improve colorectal cancer outcomes among African American Men who are also sexual and gender minorities
- To increase the equitable engagement of racial/ethnic minority populations in research



Five African American men participated in a five-week Citizen Scientist training between July and August 2020. Topics included foundational information on the ethical conduct of research, colorectal cancer training, health disparities, and human subjects protection in research.

Training

Town Hall

A virtual community town hall forum was held on December 17, 2020 in conjunction with our partners from The Blue Hat Foundation and Project Brotherhood. The topics discussed included awareness of colorectal cancer screenings, disparities in colorectal cancer screenings and treatment in African American men, and community resources availability.



OUTREACH, EDUCATION, & SERVICES

Improving Cancer Survival & Reducing Treatment Variation with Protocols for Emergency Care (ICARE)

Investigators: Heather Prendergast, MD, MS, MPH; Karriem Watson, DHS, MS, MPH, et al.

Project Team: Nasima Mannan, MPH; Ryan Stratton

ICARE - ED

Improving Cancer Survival and reducing Treatment Variations with protocols for Emergency Care (ICARE)



Collaborative Program between UI Health, UI Cancer Center, multiple other organizations, and funded through the Center for Disease Control.



The project's navigation is focused on addressing social determinants of health for survivors utilizing emergency department for care.



Navigators use distress thermometer surveys to evaluate patients' needs and link them to care and survivorship programs.

PROGRAM GOALS

At 6 -Months Post-Intervention



PROGRAM OUTCOMES

Conducted **586** telephone outreach calls

Completed **11** distress thermometer surveys

Completed wellness check for **87** community members

Provided COVID-19 resources to **47** community members

54% of individuals reached requested and received support for COVID-19



INFORMING RESEARCH

Chicago Cancer Health Equity Collaborative (ChicagoCHEC)

Investigators: Marian Fitzgibbon (UIC); John Stewart (UIC); Christina Ciecierski (NEIU); Joe Fienglass (NU); Lidia Filus (NEIU); & Melissa Simon (NU)

Project Team: Oluwaseyi Samuel Adeleke MPHc; Ifeanyi Beverly Chukwudozie, MBA, MPH; Erica Martinez, MBA, MPH; Melissa Martinez

The Chicago Cancer Health Equity Collaborative (ChicagoCHEC) is a National Cancer Institute comprehensive cancer partnership led by the Robert H. Lurie Comprehensive Cancer Center of Northwestern University, Northeastern Illinois University, and the University of Illinois at Chicago. The mission of the collaborative is to advance cancer health equity through meaningful scientific discovery, education, training, and community engagement.

Program Goals

- To strengthen a transformational alliance between UIC, NEIU, and NU-LCC in pursuit of cancer health equity in Chicago
- To initiate, conduct, and support innovative bench, translational, clinical, and prevention and control focused cancer research, with emphasis on cancer health disparities
- To develop and implement cancer-related education and outreach activities generated with the engagement of underserved communities across Chicago
- To coordinate research education and mentoring opportunities to recruit, retain, and advance a pipeline of underrepresented students in cancer research careers and to develop early career faculty who will forge independent cancer research careers
- To conduct ongoing rigorous evaluation of ChicagoCHEC activities



2020



SUMMER RESEARCH FELLOWS

All fellows reported being very satisfied with community visits and learned the importance of partnership, policy, building communities, advocacy, volunteering, diversity in healthcare systems, & building communities

34 Community Outreach & Health Awareness Events

Community members, academic & professional partners reached

Planned or Supported

Over 2,000

26

Health fairs and cultural events focused on cancer screening and health awareness



ChicagoCHEC renewed!
\$17.7 million for another 5 years



38

Peer-reviewed Articles Published

INFORMING RESEARCH

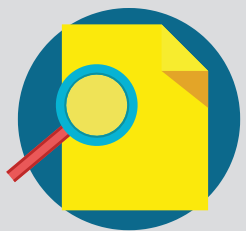
Engaging Patient Stakeholders-Informing Research and Engagement: UI Cancer Center Patient Brigade

Investigators: Karriem Watson, DHS, MS, MPH; Joanne Glenn, RN, MBA; Vida Henderson, PhD, PharmD, MPH, MFA; Candace Henley; Susan Hong, MD,

Project Team: Kimberly Richardson, MA; Erica Martinez, MBA, MPH

To build a national model of a “community focused cancer center”, the UI Cancer Center proposed to train a representative group of patients/patient advocates, known as the UI Patient Brigade, using established evidence-based PCORI tools. Our goal was to increase capacity of community members to inform implementation, translation, and dissemination strategies to help ensure that effective clinical research interventions reach targeted communities and populations.

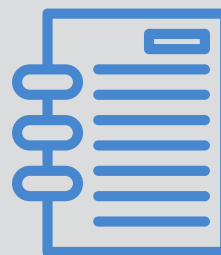
Outcomes



Increased research capacity by convening 11 highly engaged patients/advocates

Members: Carol Gyimatey, Russell Hopkins, Ruth Melgarejo, Bernadette Jones, Edward Jones, Elizabeth Rivera, Tonya Roberson, Phyllis Rodgers, Rosemarie Rogers, Leniel Scott, Angela Waller, and Maxica Williams

Developed and disseminated a patient advocacy toolkit that was informed by community and patient stakeholders



Engaged community stakeholders in a policy brief that was developed into a peer review manuscript on financial toxicity

PCORI Advocacy Toolkit was developed:

- To enhance research participation and dissemination by improving patient-provider communication with UICC research and leadership.
- To improve the quality of life and cancer healthcare decision-making capacity of survivors through research, community engagement, education, and training of cancer center members and community stakeholders.
- To empower survivors to maintain hope and enhance their quality of life.
- To empower survivors to take charge of their healthcare despite a sometimes-overwhelming environment of tests, treatments, and providers' offices.



This toolkit was funded through a Patient-Centered Outcomes Research Institute (PCORI) Eugene Washington PCORI Engagement Award (EA #10629)

INFORMING RESEARCH

Community Health Needs Assessment in Rural Illinois

Investigators: Leslie Carnahan, PhD, MPH; Karriem Watson, DHS, MS, MPH; Yamile Molina, PhD, MPH, MS

Project Team: Beverly Chukwudozie, MBA, MPH, PhDc; Nasima Mannan, MPH; Erica Martinez, MBA, MPH; Miguel Negrete, MPH, PhDc

To better understand the health needs and priorities related to cancer screening, risk factors, and community health concerns in LaSalle and Livingston Counties, the UI Cancer Center collaborated with public health departments to conduct a community health needs assessment from December 2019 to February 2020.

Livingston County

n=67

Top 3 Health Priority Areas Reported

- Cancer
- Substance abuse
- High blood pressure/
heart disease/ stroke

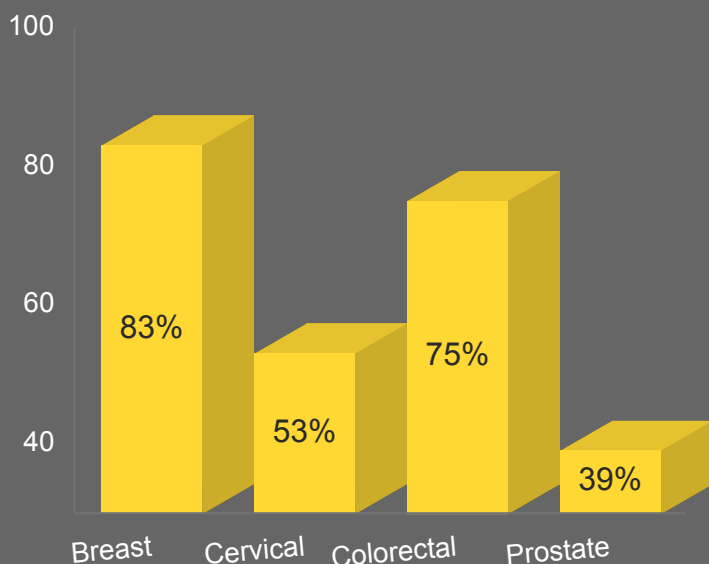
1 in 10

Reported ever having been
diagnosed with cancer

50%

Reported that a family
member had ever been
diagnosed with cancer

Reported Cancer Screenings Obtained



LaSalle County

n=21

Top 3 Health Priority Areas Reported

- Cancer
- Substance abuse
- Mental health

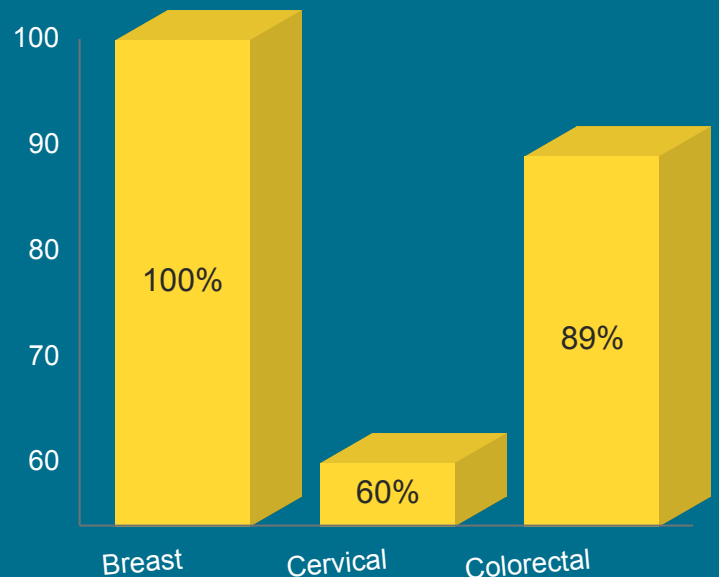
Reported ever having been
diagnosed with cancer

1 in 10

Reported that a family
member had ever been
diagnosed with cancer

33%

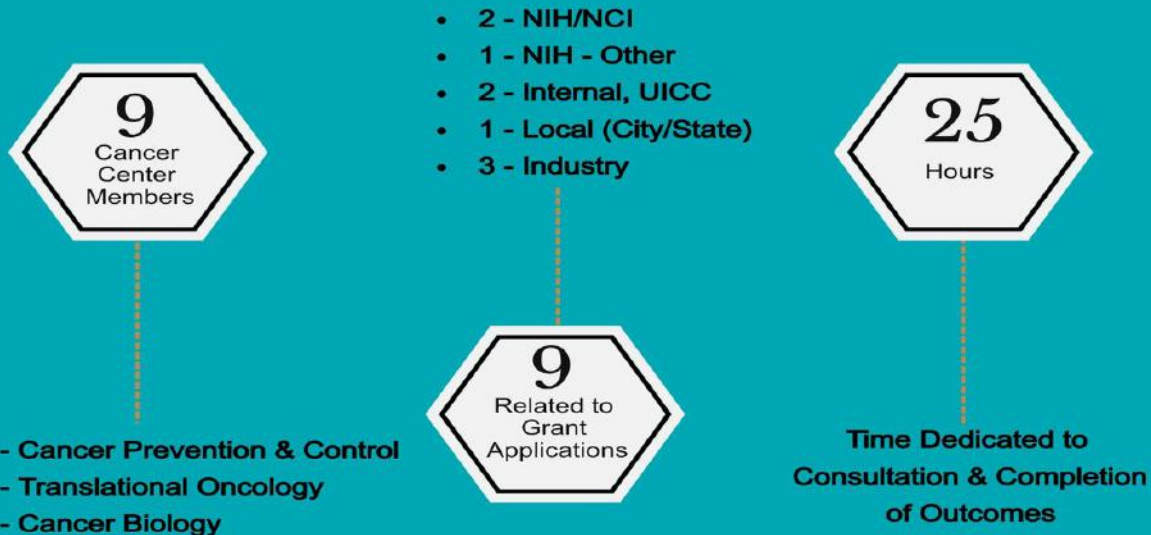
Reported Cancer Screenings Obtained



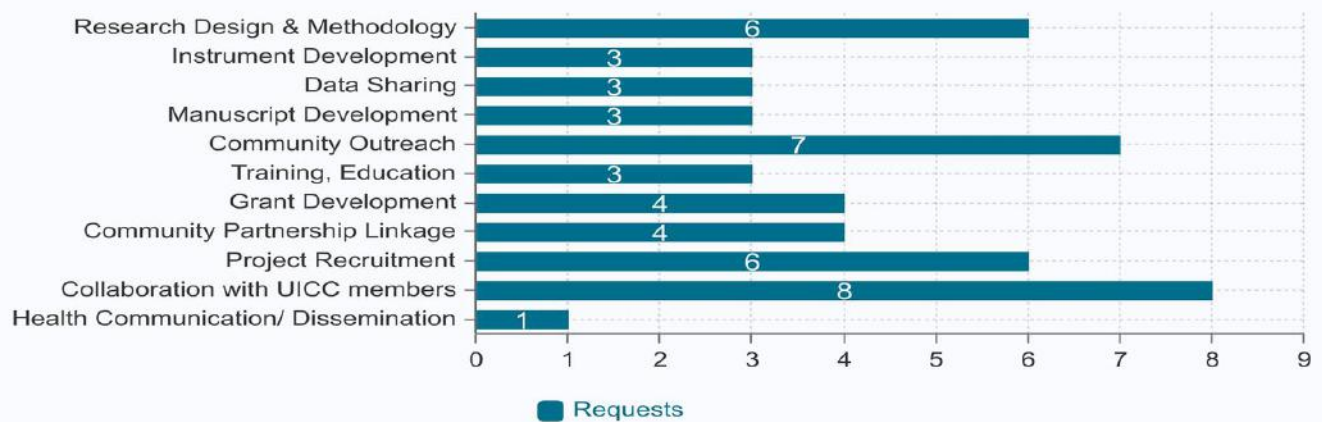
INFORMING RESEARCH

Between May - December 2020, CEHE received 15 requests for research consultations or collaborations for community engaged research initiatives.

Research Consultation/Facilitation Outcomes



Collaboration/Facilitation Interests



Long-term Consultation/Facilitation Outcomes



The UI Cancer Center's Community Outreach & Engagement aims to ensure that research conducted is community responsive and engaged. The team was instrumental in grant development and facilitation of 6 submitted proposals and 5 proposals that were awarded in 2020. All proposals had community engagement outreach and engagement components.

Submitted

Sponsor	Investigators	Proposal Summary
National Cancer Institute (PA-18-932)	PIs: Yamile Molina (Contact), Karriem Watson, Co-Is: Vida Henderson, et al.	Title: Empowering Latinas to Obtain Guideline-Concordant Breast Cancer Screenings Goal: To improve the guideline-concordant breast cancer (BC) screening among Latinas living in Chicago.
National Cancer Institute (PAR-18-869)	PI: Yamile Molina, Co-I: Leslie Carnahan, et al.	Title: Characterizing longitudinal patterns of financial hardship, social factors, and patient-reported outcomes among urban and rural breast cancer survivors Goals: Characterizing longitudinal patterns of financial hardship, social factors, and patient-reported outcomes among urban and rural breast cancer survivors.
National Cancer Institute (RFA-CA-19-034)	PIs: Ron Gaba (Contact), Marian Fitzgibbon, and Jan Kitajewski, Co-Is: Margaret Wright, et al.	Title: University of Illinois at Chicago (UIC) Center for HepatoCellular CarCinoma Equity REsearch (HCC-CARE) Goals: To eliminate liver cancer inequities through innovative research, high quality clinical care, and strong community engagement.
Livestrong	PI: Vida Henderson, Co-I: Erica Martinez	Title: For Us! (For Uplifting Survivors) Project Goals: To develop and disseminate a multiculturally tailored wellness workbook rooted in promoting well-being and coping strategies among cancer patients, survivors, and caregivers
Centers for Disease Control & Prevention (RFA-DP-21-003)	PIs: Sage Kim (Contact), Vida Henderson, Karriem Watson, Co-Is: Caryn Peterson, Keith Naylor, Lauren Green	Title: Exploring Adoption of Multi-level Interventions (EXAMIN) for Breast and Colorectal Cancer Screening Significance Goals: To evaluate the effects of systemic racism on social and economic contexts and built environment, which results in racial/ethnic disparities in breast and colorectal cancer screening and follow-up of routine and abnormal screening results.

Awarded

Sponsor	Investigators	Proposal Summary
National Cancer Institute (K01CA248852)	PI: Vida Henderson	<p>Title: Promoting Genetic Counseling among African American Women with Hereditary Risk for Breast Cancer</p> <p>Goal: Using a randomized control trial design, the objective of this research project is to test the effectiveness of a culturally targeted video, previously developed by our research team, on promoting genetic counseling attendance among AA women determined to be at high risk for breast cancer through cancer genetic risk assessment.</p>
NATIONAL HEART, LUNG, AND BLOOD INSTITUTE (UG3HL151302)	PIs: Phoenix Matthews (Contact), Karriem Watson, Robert Winn (VCU)	<p>Title: Mi QUIT CARE (Mile Square QUIT Community-Access-Referral-Expansion)</p> <p>Goals: The purpose of this study is to demonstrate the feasibility, effectiveness, and cost-effectiveness of electronically delivered smoking cessation interventions via patient portals in a network of FQHC clinics.</p>
National Cancer Institute- ChicagoCHEC SHARED (U54CA202997)	PIs: Phoenix (Alicia) Matthews, Karriem Watson, Josef Ben Levi (NEIU), Marcus Murray (Project Brotherhood) and David O'Dell (NU)	<p>Title: The Supporting High Risk African American Men in Research & Engagement in Decision Making for Lung Cancer Screening (SHARED)</p> <p>Goals: To engage African American men as Citizen Scientists to develop, test and evaluate culturally tailored Decision Aid to improve Lung Cancer screening.</p>
NATIONAL CANCER INSTITUTE (UE5CA254170*) <small>*Primary Site: John Hopkins University</small>	PIs: Jeffrey Leeks (Hopkins), Karriem Watson (UIC), et al.	<p>Title: Scalable multi-mode education to increase use of ITCR tools by diverse analysts</p> <p>Goals: To develop course materials in cancer informatics, develop an open source platform for sharing and producing informatics lecture content, and implement online and in-person training programs to improve usability of ITCR (Informatics Technology for Cancer Research) tools.</p>
Bristol-Myers Squibb Company (in collaboration with LUNgevity and CancerCare)	PI: Phoenix Matthews, Co-I: Nasima Mannan	<p>Title: Connecting for Lung Health</p> <p>Goals: The Connecting for Lung Health project will utilize a lay patient navigation model to implement strategies focused on improving awareness, access and usage of LDCT, and to facilitate smoking cessation counseling among at risk black men in the south and west side Chicago and Bedford-Stuyvesant and Brownsville in Brooklyn.</p>
Illinois Innovation Network	PI: Courtney Hughes (NIU), Co-Is: Mahdi Vehza (NIU), Margaret Wright (UIC)	<p>Title: Development and Application of a Novel Cancer Mortality Index in Illinois: Discovering Opportunities for Public Health InterventionNarrative</p> <p>Goals: Use statistical and geospatial analysis to: construct a cancer mortality index that incorporates data for the four most common cancers; identify IL counties and zip codes with the highest cancer mortality index scores; and determine predictors of cancer mortality index scores, including lifestyle behaviors, health care access and utilization, sociodemographics, and neighborhood and environment.</p>

Asche, C. V., Watson, K., Baumgartner, M. G., Buscemi, J., Fitzgibbon, M., Simon, M., Winn, R., Henley, C., Glenn, J., & Hong, S. (2020). Society of Behavioral Medicine (SBM) position statement: support increased knowledge and efforts to address the financial burden associated with cancer treatment. *Translational behavioral medicine*, ibaa073. Advance online publication. <https://doi.org/10.1093/tbm/ibaa073>

Boodram, B., Kaufmann, M., Aronsohn, A., Hamlish, T., Peregrine Antalis, E., Kim, K., Wolf, J., Rodriguez, I., Millman, A. J., & Johnson, D. (2020). Case Management and Capacity Building to Enhance Hepatitis C Treatment Uptake at Community Health Centers in a Large Urban Setting. *Family & community health*, 43(2), 150–160. <https://doi.org/10.1097/FCH.0000000000000253>

Brewer, K. C., Peacock, N. R., Ferrans, C. E., Campbell, R. T., Polite, B., Carnahan, L., Jones, L. A., & Rauscher, G. H. (2020). Gender- and Race-Based Differences in Barriers and Facilitators to Early Detection of Colon Cancer. *Journal of women's health* (2002), 29(9), 1192–1202. <https://doi.org/10.1089/jwh.2019.8163>

Hallgren, E., Hastert, T. A., Carnahan, L. R., Eberth, J. M., Mama, S. K., Watson, K. S., & Molina, Y. (2020). Cancer-Related Debt and Mental-Health-Related Quality of Life among Rural Cancer Survivors: Do Family/Friend Informal Caregiver Networks Moderate the Relationship?. *Journal of health and social behavior*, 61(1), 113–130. <https://doi.org/10.1177/0022146520902737>

Hamlish, T., Liu, L., Zhang, Z., Sohmer, D., Moton, Z., Johnson, D., Frolova, A., Olopade, O., & Hong, S. (2020). Care Coordination for Breast Cancer Survivors in Urban Underserved Communities: Will Treatment Summaries and Survivorship Care Plans Be Enough?. *Journal of racial and ethnic health disparities*, 7(3), 577–583. <https://doi.org/10.1007/s40615-019-00687-5>

Henderson, V., Tossas-Milligan, K., Martinez, E., Williams, B., Torres, P., Mannan, N., Green, L., Thompson, B., Winn, R., & Watson, K. S. (2020). Implementation of an integrated framework for a breast cancer screening and navigation program for women from underresourced communities. *Cancer*, 126 Suppl 10, 2481–2493. <https://doi.org/10.1002/cncr.32843>

Henderson, V., Madrigal, J. M., & Handler, A. (2020). A mixed methods study: Midlife African American women's knowledge, beliefs, and barriers to well-woman visit, flu vaccine, and mammogram use. *Journal of women & aging*, 32(3), 292–313. <https://doi.org/10.1080/08952841.2018.1549433>

Johnson, A., Broughton, S., Aponte-Soto, L., Watson, K., Pinto, C., Empey, P., Reis, S., Winn, R., & Massart, M. (2020). Participatory Genomic Testing Can Effectively Disseminate Cardiovascular Pharmacogenomics Concepts within Federally Qualified Health Centers: A Feasibility Study. *Ethnicity & disease*, 30(Suppl 1), 167–176. <https://doi.org/10.18865/ed.30.S1.167>

Lewis-Thames, M. W., Carnahan, L. R., James, A. S., Watson, K. S., & Molina, Y. (2020). Understanding Posttreatment Patient-Provider Communication and Follow-Up Care Among Self-Identified Rural Cancer Survivors in Illinois. *The Journal of rural health : official journal of the American Rural Health Association and the National Rural Health Care Association*, 36(4), 549–563. <https://doi.org/10.1111/jrh.12414>

Papautsky, E. L., & Hamlish, T. (2020). Patient-reported treatment delays in breast cancer care during the COVID-19 pandemic. *Breast cancer research and treatment*, 184(1), 249–254. <https://doi.org/10.1007/s10549-020-05828-7>

Papautsky, E. L., & Hamlish, T. (2021). Emotional Response of US Breast Cancer Survivors during the COVID-19 Pandemic. *Cancer investigation*, 39(1), 3–8. <https://doi.org/10.1080/07357907.2020.1841220>. Epub 2020 Nov 9

Strayhorn, S. M., Carnahan, L. R., Zimmermann, K., Hastert, T. A., Watson, K. S., Ferrans, C. E., & Molina, Y. (2020). Comorbidities, treatment-related consequences, and health-related quality of life among rural cancer survivors. *Supportive care in cancer : official journal of the Multinational Association of Supportive Care in Cancer*, 28(4), 1839–1848. <https://doi.org/10.1007/s00520-019-05005-7>

Strayhorn, S. M., Lewis-Thames, M. W., Carnahan, L. R., Henderson, V. A., Watson, K. S., Ferrans, C. E., & Molina, Y. (2021). Assessing the relationship between patient-provider communication quality and quality of life among rural cancer survivors. *Supportive care in cancer : official journal of the Multinational Association of Supportive Care in Cancer*, 29(4), 1913–1921. <https://doi.org/10.1007/s00520-020-05674-9>. Epub 2020 Aug 15

Tussing-Humphreys, L., Buscemi, J., Kanoon, J. M., Watts, E. A., Watson, K., Fitzgibbon, M., Jung, B., & Winn, R. (2021). Society of Behavioral Medicine Update: retain support for the National Colorectal Cancer Roundtable's call to action to reach 80% colorectal cancer screening. *Translational behavioral medicine*, 11(2), 656–658. <https://doi.org/10.1093/tbm/ibaa044>; Epub 2020 May 22.

Watson, K. S., Siegel, L. D., Henderson, V. A., Murray, M., Chukwudozie, I. B., Odell, D., Stinson, J., Ituah, O., Ben Levi, J., Fitzgibbon, M. L., Kim, S., & Matthews, P. (2020). The SHARED Project: A Novel Approach to Engaging African American Men to Address Lung Cancer Disparities. *American journal of men's health*, 14(5), 1557988320958934. <https://doi.org/10.1177/1557988320958934>

Watson, K., Buscemi, J., Fitzgibbon, M., Murray, M., Murphy, A., Abern, M., Gann, P., Levi, J. B., Stinson, J., Diefenbach, M., & Winn, R. A. (2020). Society of Behavior Medicine (SBM) Urges Congress to Ensure Affordable Care Act Coverage of Prostate Cancer Screening Support Services for High-Risk Men. *Translational behavioral medicine*, 10(2), 492–494. <https://doi.org/10.1093/tbm/ibz034>

POLICY ADVOCACY

The policy advocacy efforts prioritize supporting policies that are focused on improving cancer prevention efforts and increasing access to quality care by addressing systemic barriers for the communities in Cook County and beyond.

2022-2027 Illinois Comprehensive Cancer Control Plan

With funding from the Centers for Disease Control and Prevention's National Comprehensive Cancer Control Program, the Illinois Department of Public Health is currently working on implementing the Illinois Comprehensive Cancer Control Program (ICCCP) in collaboration with the Illinois Cancer Partnership (ICP). Our team is leading the community engagement strategy to engage diverse stakeholders utilizing qualitative assessments to share feedback with the 2022-2027 Illinois Comprehensive Cancer Control Plan development team. Our investment will ensure that community input can be integrated into plan. The plan will be used to identify, develop, and determine policy recommendations and advocacy efforts across the UI Cancer Center catchment area and the state.

Supporting Community Navigation

In collaboration with the Office of the Vice Chancellor for Health Affairs, the American Cancer Society Cancer Action Network (Illinois), and the Harvard Law School Center for Health Law and Policy Innovation, our team developed legislative recommendations for community health worker/navigation training, certification and reimbursement options. Community navigation has been instrumental to our outreach, education and engagement strategies for cancer prevention and screening initiatives in the communities that we serve.

Cancer Screening and Prevention

- **Refunding IBCCP:** We supported the restoring of funding to ensure access to cancer screenings and cancer prevention. Public Act 101-0637 was passed on June 5, 2020, which approved \$14.5 million to support the Illinois Breast and Cervical Cancer Program (IBCCP). Funding had been cut by 40% in the first budget proposal. Since 1995, IBCCP has offered free mammograms, breast exams, pelvic exams, and Pap tests to eligible women.
- **End the Sale of Flavored Tobacco:** A city ordinance to end the sale of flavored tobacco products was introduced by Alderman Matt O'Shea (19th Ward) in June of 2020. The UI Cancer Center supported the original ordinance that included the ban of Menthol cigarettes.

Access to Cancer Care and Treatments

- **Addressing barriers to access Clinical Trials:** Senate Bill 1864- Health Care Afford/Info/Kidney, includes language for Medicaid coverage of clinical trials. On February 12, 2020, UI Health, the UI Cancer Center, and Mile Square Health Centers, spearheaded a press conference with Representative Camille Lilly, a champion of access to quality and affordable care.
- In Nov 2020, Drs. Henderson and Watson provided recommendations for legislative action to mitigate health disparities experienced by African Americans in Illinois to IL Black Caucus.

Policy recommendations included:

- Invest in STEM pipeline programs to increase diversity in the healthcare workforce
- Support legislation for payor reimbursement for Community Health Worker/Patient Navigation services
- Support provision of resources for a statewide data collection tool for Social Determinants of Health that can be used to inform public health and clinical interventions
- Support legislation focused on improving women's health and reproductive health, including HPV awareness

ENGAGEMENT & OUTREACH ACTIVITIES

Organization	Event Name	People Directly Engaged
100 Black Men of Chicago	The 3rd Annual "100 Black Men of Chicago" Health & Wellness Expo	40
4th District State Representative Delia Ramirez & Illinois Department of Public Health	McCormick YMCA Covid Test/Flu Shots Health Event	50
ALAS Wings	ALAS-Wings Survivorship Support Group	15
Alpha Kappa Psi	Institute of Business Leadership- Cancer Prevention Awareness	10
American Cancer Society	IL Researchers Fighting Breast Cancer	46
American Cancer Society Cancer Action Network	2020 ACS CAN Illinois Policy Forum	46
American Liver Foundation	Virtual Liver Life Walk	15
American Public Health Association	APHA Annual Meeting Oral Presentation-Community Health Needs Assessments	41
Blue Hat Foundation	Colorectal Cancer Community Town Hall Forum	38
CHAMPIONS NETWork Program	CHAMPIONS Program Speaker's Series	25
Chicago Academic Cancer Center Community Engagement Collaborative (CACCCEC)	Cancer and COVID-19 Webinar Series (4 events)	133
Chicago CHEC	ChicagoCHEC Seminar Series (2 events)	98
Chicago CHEC	ChicagoCHEC Fellows Presentations (2 events)	42
Chicago CHEC	Community Conversations during COVID-19 (3 events)	85
ChicagoCHEC	ChicagoCHEC 5th Annual Community Forum	70
CISCRP	AWARE for ALL Chicago- Diversity in Clinical Trials	200
Community Alliance	Halloween Drive Thru Parade- Women's Health Cancer Prevention Resources	250
Consulado Mexicano	Breast Cancer Prevention Presentation	50
Crandon Homes and Park Way Gardens	Protective Protection Equipment Give-Away- Colorectal Cancer Education	150
Edward Brown Apartments	South Land and South Side PPE Pop-Up Give -Away- Colorectal Cancer Education	250
ELLAS	Cafe Con Conchas Conversations (3 events)- Breast Cancer Education	118

ENGAGEMENT & OUTREACH ACTIVITIES

Organization	Event Name	People Directly Engaged
ELLAS	Cafe Con Conchas Drive Thru- Breast Cancer Education and Resources	175
Euth Foundation	Global Launchpad Virtual Conference on Health Equity	100
Family Christian Health Center	South Land /South Shore PPE Pop-Up Give-Away- Colorectal Cancer Education	250
Family Focus	Cervical Cancer Presentation	15
Governor's State University	The Southland Health and Wellness Hour: Season 1: Episode 5	57
Humboldt Park Health	2020 Census Event	100
IBCCP - Community Navigation Toolkit	IBCCP Webinars (3 events)	98
Iglesia Luterana de La Trinidad	Cervical Cancer Awareness Presentation	30
IL State Health Committee	IL Senate Health Committee Hearing	45
Illinois Cancer Partnership	Illinois Cancer Partnership (ICP) Webinars (2 events)	204
Illinois Primary Health Care Association	NQLC - Great American Smokeout	25
Latino Caucus	Latino Caucus Cancer Navigation Education Event	15
Latinos Progresando	MEXTalks	301
Liberty Temple Full Gospel Outreach Ministries	Southland/Southside PPE Giveaway	300
Lurie Cancer Center	Lurie Cancer Center Townhall	62
McCormick YMCA	McCormick YMCA Produce Mobile (2 events)	4
Mexican Consulate	Mexican Consulate Facebook Live - Breast Cancer Awareness	100
Mile Square Health Center	Latinx Young Adults and Covid-19	25
Mile Square Health Center	Walk-in-Wednesdays (3 events)	72
Mile Square Health Center	Pink & Purple Fedora Breast cancer and Domestic violence Awareness	50
Mile Square Health Center	Back to Health During COVID-19	43

ENGAGEMENT & OUTREACH ACTIVITIES

Organization	Event Name	People Directly Engaged
New Beginnings Church of Chicago	New Beginnings Church of Chicago- 5000 Families Food Give-A-Way	250
OCECHE	UCPD MOvember Prostate Awareness	10
PCORI	Townhall Forum	28
Peer Plus Education and Training	Community Engagement with the Community in Mind	132
Pilsen Neighbors Community Council	Fiesta Del Sol	150
Project Brotherhood	The Impact of COVID-19 on the Salon Community Webinar	48
ProjectHOOD	COVID-19 Testing Drive and PPE Give Away (2 events)	250
Rehabilitation Sciences Program	Navigation Approaches in Rehabilitation Presentation	25
Representative Thaddeus Jones & ACS CAN	Breast Cancer Education	50
San Bonifacio	San Bonifacio Cervical Cancer Presentations (2 events)	16
St. Lukes United Church of Christ	COVID-19 Testing, PPE and Produce Give-Away (9 events)	376
State Rep. Meyers-Martin District Office	Southland/South Side PPE Pop-Ups	250
Susan G. Komen® - Chicago	Survivor Interview	1
The Mason's	The Mason's Men's Health Event	35
UI Health	HRSA Primary Care Training Enhancement Workshop- Community Navigation Best Practices	25
UIC	Community Outreach and Engagement Best Practices Overview (2 events)	53
UIC College of Liberal Arts and Sciences	Health Professions Forum Program	15
UIC College of Medicine	Cancer Screening and Prevention: Research and Engagement within a FQHC	46
Univision	Univision Interview	2
Village of University Park- Mayor Joseph Roudez III	South Land/South Side Testing & PPE Pop-Up Give-Aways	300
YAAS!	Amplifying Impact and Building Community Capacity to Improve Cancer Health Outcomes	35
YAAS!	YAAS! Paint n' Sip	9

2020 PARTNERSHIPS

Thank you to all of our active partners in 2020! A special thank you to the Mile Square Health Centers and Community Based Practice initiatives. We could not do our work without your collaboration and expertise.

A Silver Lining	John H. Stroger Jr, Cook County HHS
African International House	Latinos Progresando
AKArama foundation	Lawndale Christian Health Center
ALAS-Wings	Legacy Training
Alivio Medical Center	Make a Wish Illinois
AllianceChicago	Meridian Health
Amber Coalition	Michael Reese Foundation
American Cancer Society	Molina Healthcare of Illinois
American Cancer Society Cancer Action Network, Inc. (ACS CAN)	Mt. Sinai Helping Her Live
American Liver Foundation	NAACP Illinois State Chapter
American Lung Association In Greater Chicago	NAACP of Illinois Alexander/Pulaski County Branch
Bristol Myers Squibb Company	Northeastern Illinois University
Bristol Myers Squibb Foundation	Oak Street Health
Cancer Care Specialists of IL (CCSI)	Patient Advocate Foundation
Central Illinois Area Health Education Center (AHEC)	Peer Plus Education & Training Advocates
Chicago Department of Public Health	Pilsen Neighbors Community Council (PNCC)
Chicago Hispanic Health Coalition	Project Brotherhood
Chinese American Service League	Puerto Rican Cultural Center
Community Health and Emergency Services (CHESI)	Lurie Cancer Center
Consulate General of Mexico in Chicago	Sangamon County Health Department
Decatur Memorial Hospital	Sidney Hillman Health Center
ELLAS	Sisters Working It Out
Equal Hope	Southern 7 Health Department
Gilda's Club Chicago	St. Clair County Health Department
Gospel Run	St. John Praise and Worship Center
Governors State University	St. Luke's United Church of Christ
Greater Chicago Food Depository	Susan G. Komen
Hope Fest	Susan G. Komen Memorial Affiliate
Howard Brown Health	The Blue Hat Foundation
Humboldt Park Health	The Loretto Hospital
Illinois Breast and Cervical Cancer Program	The Timothy Francis Jones Foundation
Illinois Cancer Partnership	Triage Cancer
Illinois Department of Public Health	University of Chicago Comprehensive Cancer Center
IMAN Community Health Center	Wellness House
Instituto del Progreso Latino (INSTITUTO)	WOT Foundation, Inc.



UNIVERSITY OF ILLINOIS
CANCER CENTER

cancer.uillinois.edu